

Contract

Colour

Book

crevin

Crevin links the mindful and sustainability-conscious designer to a distinct contemporary aesthetic based on homely design, performance and artisanal mastery. Thanks to their double woven structure, Crevin contract fabrics are made flame retardant by incorporating Fr-yarn into the base fabric, without applying environmentally harmful chemicals or back-coatings.

Drom / Drom-Fr
Granit / Granit-Fr
Libra / Libra-Fr
Moss / Moss-Fr
Ito / Ito-Fr
Moulin / Moulin-Fr
Sorra / Sorra-Fr
Sublim / Sublim-Fr
Velvety / Velvety-Fr

All fabrics are available in both Fr and non-Fr, and come with the quality seal **PERFORMANCE+**, enabling the easy removal of soils and stains with a solution of water and neutral soap.



Drom/Drom-Fr N° 50



Sublim/Sublim-Fr N° 01



● Ito/Ito-Fr N° 51



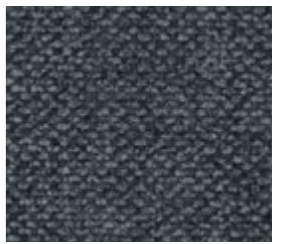
Sublim/Sublim-Fr N° 07



Sublim/Sublim-Fr N° 50



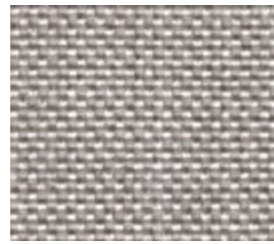
Moulin/Moulin-Fr N° 50



Velvety/Velvety-Fr N° 53



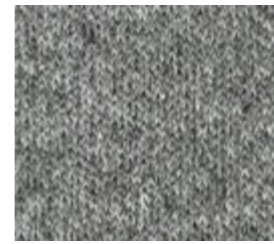
Moulin/Moulin-Fr N° 51



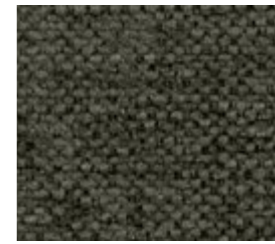
Libra/Libra-Fr N° 07



Drom/Drom-Fr N° 04



● Moss N° 51



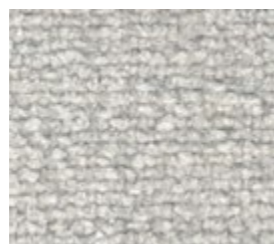
Sublim/Sublim-Fr N° 52



● Moss N° 53



● Velvety/Velvety-Fr N° 51



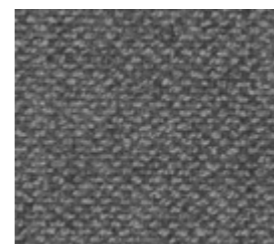
● Sorra/Sorra-Fr N° 51



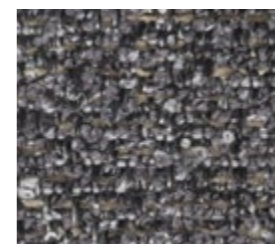
Libra/Libra-Fr N° 50



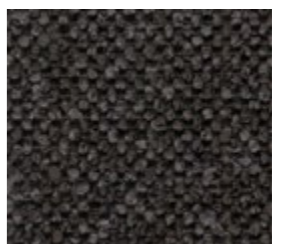
Granit/Granit-Fr N° 54



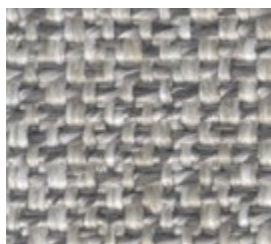
Velvety/Velvety-Fr N° 52



● Granit/Granit-Fr N° 52



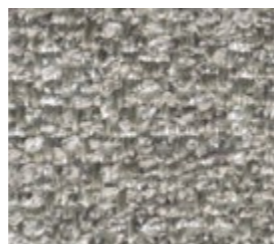
Ito/Ito-Fr N° 53



Moulin/Moulin-Fr N° 54



● Moss N° 50



Granit/Granit-Fr N° 51



● Velvety/Velvety-Fr N° 54



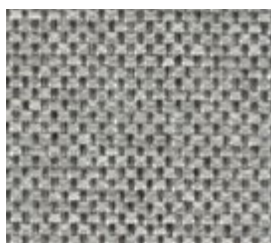
Drom/Drom-Fr N° 51



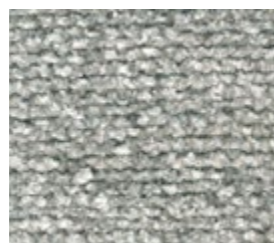
Drom/Drom-Fr N° 54



Drom/Drom-Fr N° 75



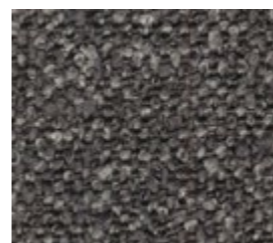
Drom/Drom-Fr N° 59



● Sorra/Sorra-Fr N° 54



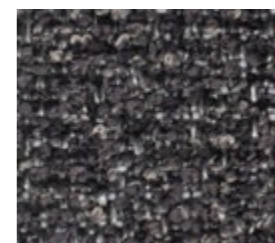
Libra/Libra-Fr N° 51



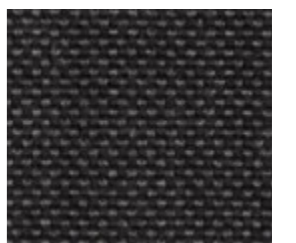
Ito/Ito-Fr N° 52



Libra/Libra-Fr N° 52



● Granit/Granit-Fr N° 53



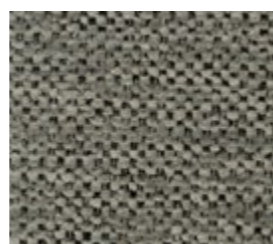
Libra/Libra-Fr N° 59



● Sorra/Sorra-Fr N° 52



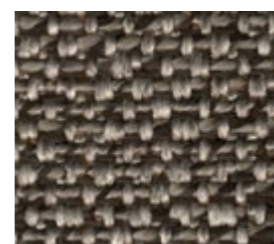
Drom/Drom-Fr N° 52



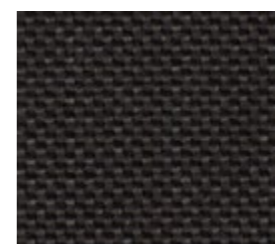
Sublim/Sublim-Fr N° 54



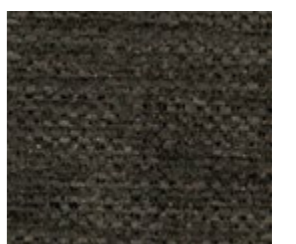
● Sorra/Sorra-Fr N° 53



Moulin/Moulin-Fr N° 52



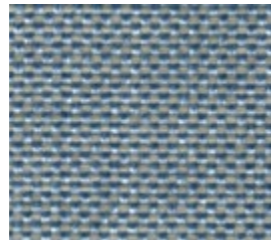
Libra/Libra-Fr N° 53



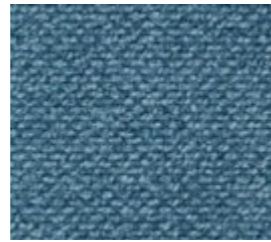
Sublim/Sublim-Fr N° 53



● Moss N° 40



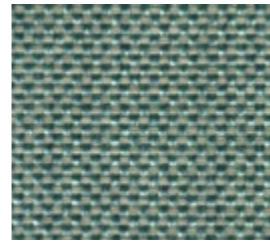
Libra/Libra-Fr N° 49



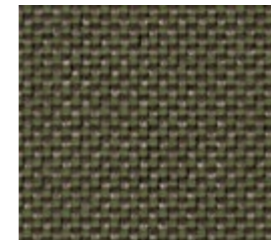
● Velvety/Velvety-Fr N° 49



Sublim/Sublim-Fr N° 34



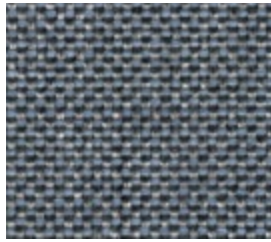
Libra/Libra-Fr N° 34



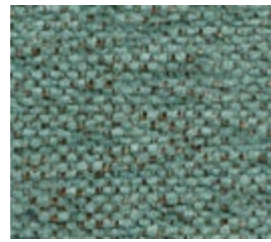
Libra/Libra-Fr N° 30



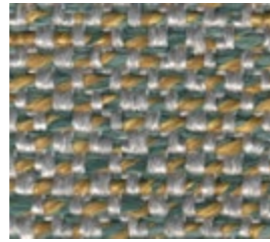
● Moss N° 30



Libra/Libra-Fr N° 41



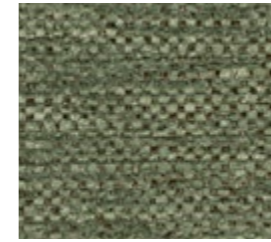
Sublim/Sublim-Fr N° 40



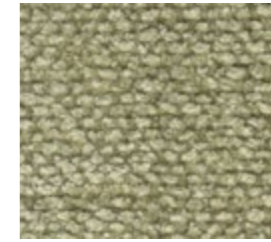
Moulin/Moulin-Fr N° 33



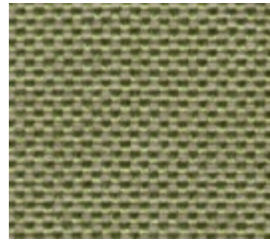
● Moss N° 32



Sublim/Sublim-Fr N° 32



● Sorra/Sorra-Fr N° 39



Libra/Libra-Fr N° 39



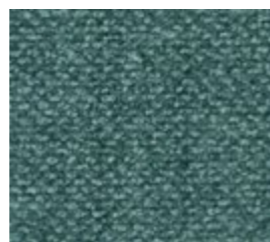
Sublim/Sublim-Fr N° 43



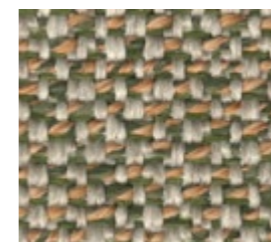
● Moss N° 46



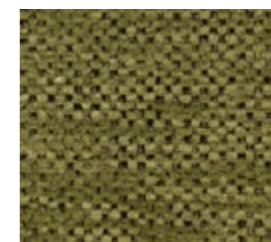
● Granit/Granit-Fr N° 45



● Velvety/Velvety-Fr N° 33



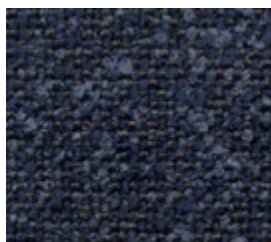
Moulin/Moulin-Fr N° 38



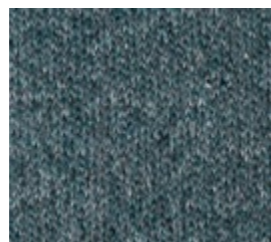
Sublim/Sublim-Fr N° 30



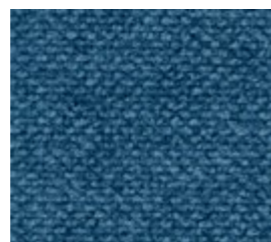
Drom/Drom-Fr N° 31



● Ito/Ito-Fr N° 45



● Moss N° 42



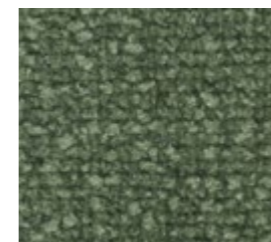
● Velvety/Velvety-Fr N° 45



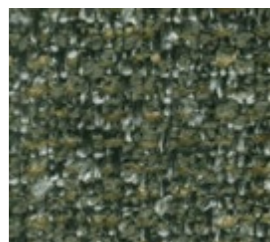
Libra/Libra-Fr N° 40



Moss N° 38



● Sorra/Sorra-Fr N° 32



● Granit/Granit-Fr N° 32



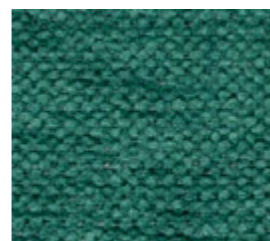
Moulin/Moulin-Fr N° 47



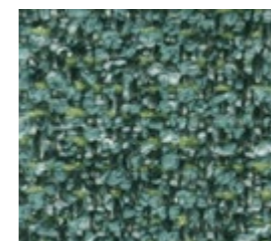
Drom/Drom-Fr N° 43



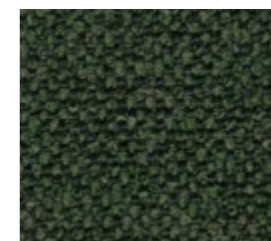
Drom/Drom-Fr N° 40



Sublim/Sublim-Fr N° 33



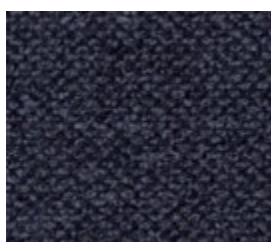
● Granit/Granit-Fr N° 33



Ito/Ito-Fr N° 38



Drom/Drom-Fr N° 30



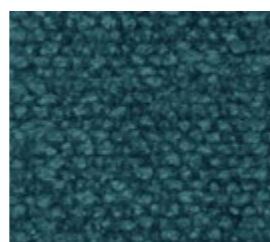
● Velvety/Velvety-Fr N° 47



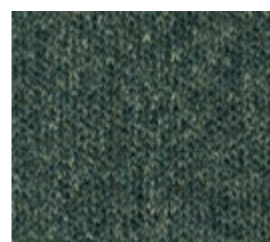
● Moss N° 45



● Velvety/Velvety-Fr N° 43



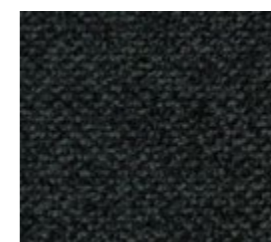
● Sorra/Sorra-Fr N° 43



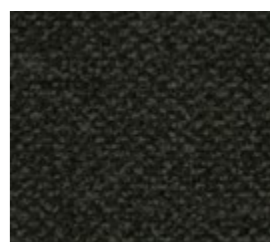
Moss N° 35



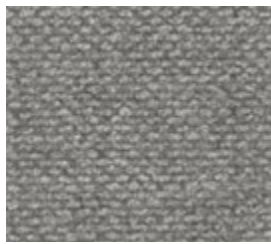
Drom/Drom-Fr N° 34



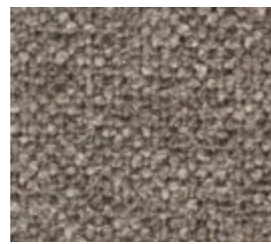
● Velvety/Velvety-Fr N° 35



● Velvety/Velvety-Fr N° 38



● Velvety/Velvety-Fr N° 11



Ito/Ito-Fr N° 18



Drom/Drom-Fr N° 13



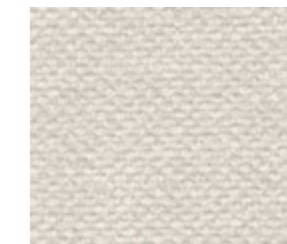
Sublim/Sublim-Fr N° 05



● Granit/Granit-Fr N° 01



Drom/Drom-Fr N° 02



● Velvety/Velvety-Fr N° 05



● Sorra/Sorra-Fr N° 18



Libra/Libra-Fr N° 11



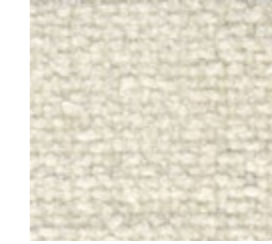
Sublim/Sublim-Fr N° 13



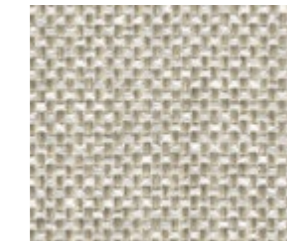
Drom/Drom-Fr N° 09



Sublim/Sublim-Fr N° 02



● Sorra/Sorra-Fr N° 05



Drom/Drom-Fr N° 06



Libra/Libra-Fr N° 18



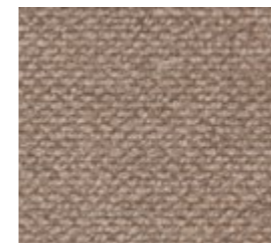
Sublim/Sublim-Fr N° 75



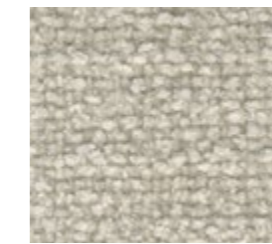
● Granit/Granit-Fr N° 08



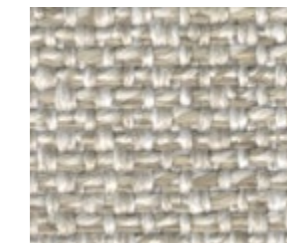
Drom/Drom-Fr N° 10



● Velvety/Velvety-Fr N° 10



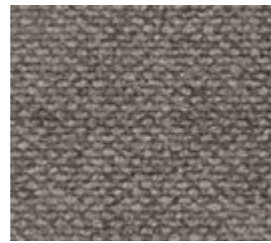
● Sorra/Sorra-Fr N° 07



Moulin/Moulin-Fr N° 05



Drom/Drom-Fr N° 15



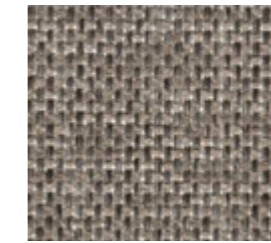
● Velvety/Velvety-Fr N° 18



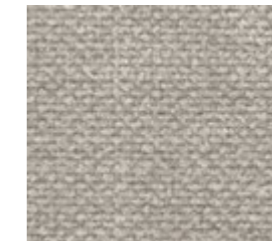
Sublim/Sublim-Fr N° 11



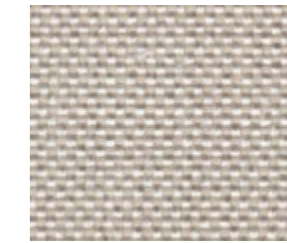
● Granit/Granit-Fr N° 07



Drom/Drom-Fr N° 11



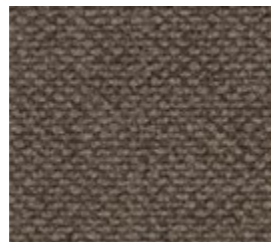
● Velvety/Velvety-Fr N° 07



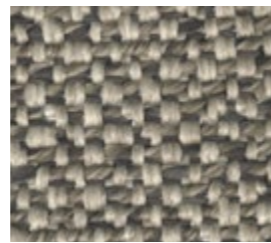
Libra/Libra-Fr N° 05



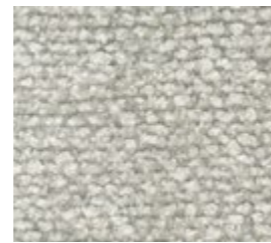
● Granit/Granit-Fr N° 12



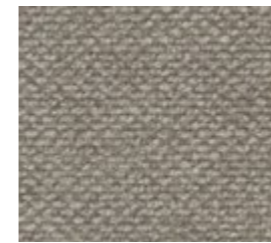
● Velvety/Velvety-Fr N° 12



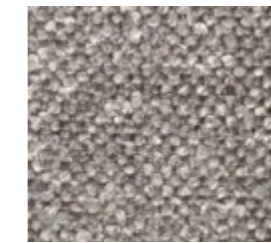
Moulin/Moulin-Fr N° 10



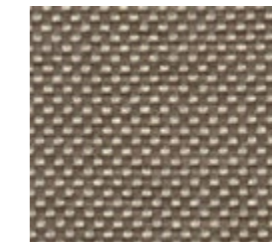
● Sorra/Sorra-Fr N° 11



● Velvety/Velvety-Fr N° 08



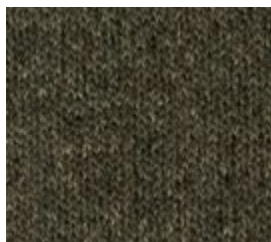
● Ito/Ito-Fr N° 11



Libra/Libra-Fr N° 10



● Ito/Ito-Fr N° 05



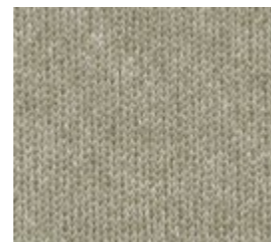
Moss N° 14



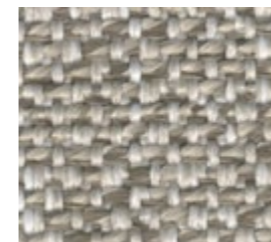
Sublim/Sublim-Fr N° 12



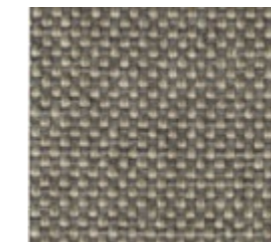
● Sorra/Sorra-Fr N° 08



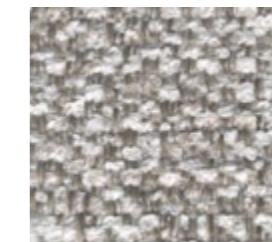
● Moss N° 11



Moulin/Moulin-Fr N° 07



Libra/Libra-Fr N° 08



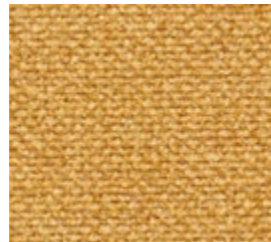
● Granit/Granit-Fr N° 05



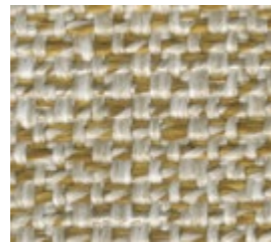
● Moss N° 07



Drom/Drom-Fr N° 19



● Velvety/Velvety-Fr N° 20



Moulin/Moulin-Fr N° 20



● Sorra/Sorra-Fr N° 71



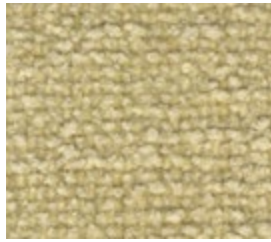
Ito/Ito-Fr N° 71



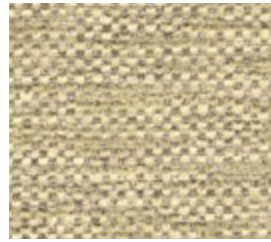
Drom/Drom-Fr N° 71



Sublim/Sublim-Fr N° 71



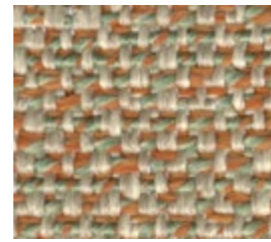
● Sorra/Sorra-Fr N° 19



Sublim/Sublim-Fr N° 19



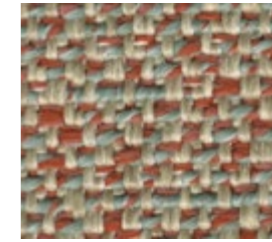
Libra/Libra-Fr N° 20



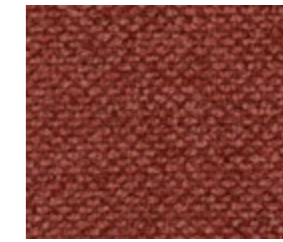
Moulin/Moulin-Fr N° 26



Moss N° 61



Moulin/Moulin-Fr N° 62



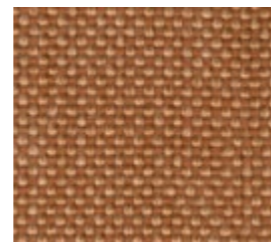
● Velvety/Velvety-Fr N° 62



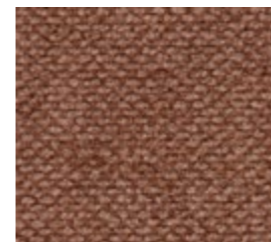
Moss N° 16



Sublim/Sublim-Fr N° 16



Libra/Libra-Fr N° 23



● Velvety/Velvety-Fr N° 71



Drom/Drom-Fr N° 62



Moss N° 60



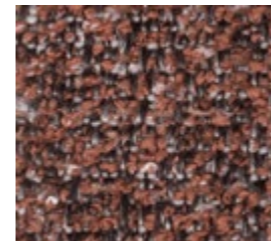
● Ito/Ito-Fr N° 20



Drom/Drom-Fr N° 16



● Sorra/Sorra-Fr N° 26



Granit/Granit-Fr N° 21



Libra/Libra-Fr N° 22



Sublim/Sublim-Fr N° 62



● Sorra/Sorra-Fr N° 64



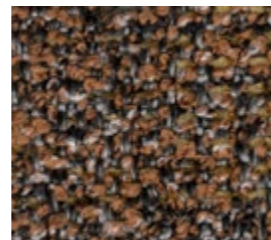
● Moss N° 20



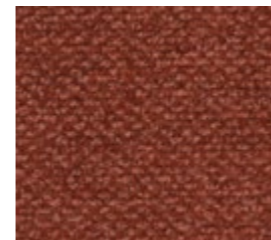
Sublim/Sublim-Fr N° 26



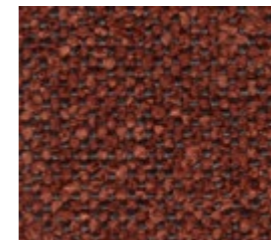
● Moss N° 24



Granit/Granit-Fr N° 26



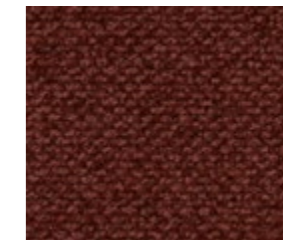
● Velvety/Velvety-Fr N° 21



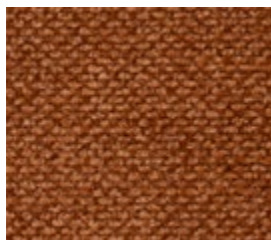
● Ito/Ito-Fr N° 21



Sublim/Sublim-Fr N° 64



● Velvety/Velvety-Fr N° 22



● Velvety/Velvety-Fr N° 26



Drom/Drom-Fr N° 26



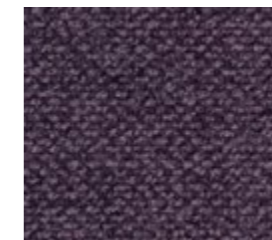
● Moss N° 21



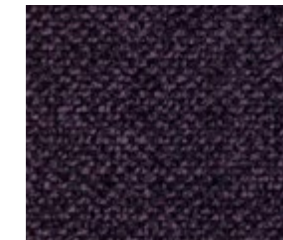
Drom/Drom-Fr N° 27



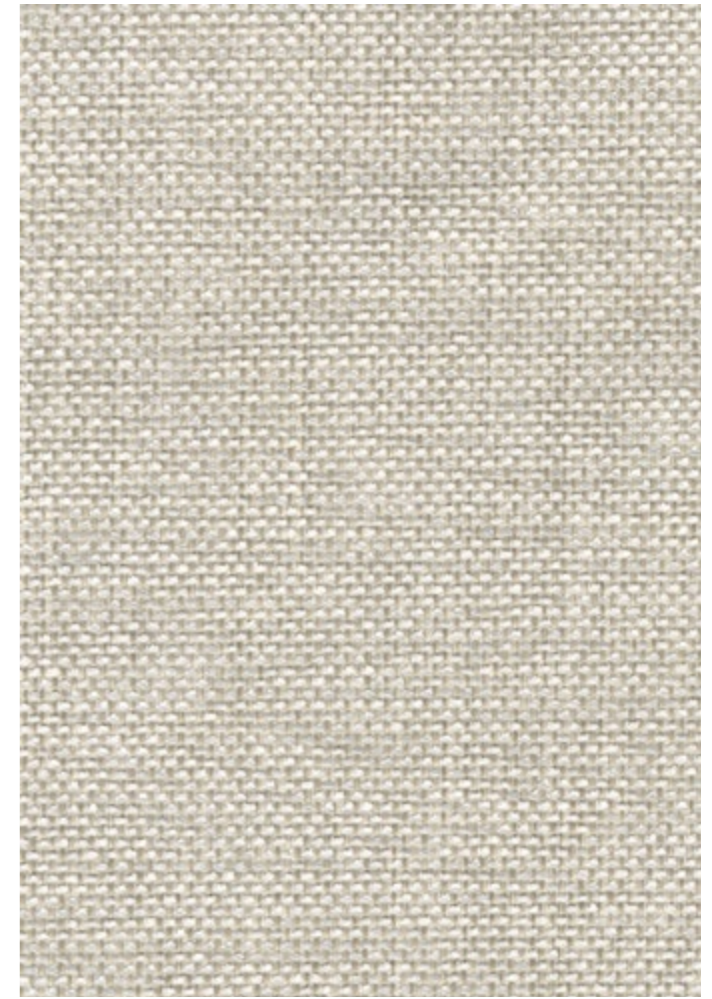
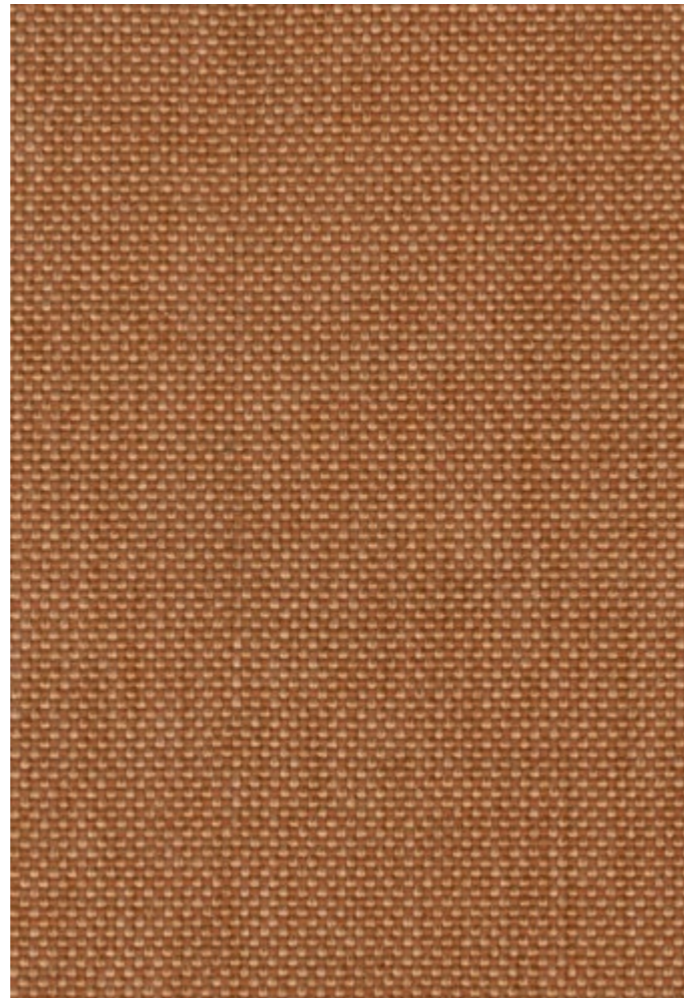
● Moss N° 65



● Velvety/Velvety-Fr N° 44



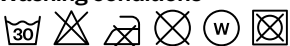


● Velvety/Velvety-Fr N° 63



Libra-Fr

Libra is made out of polypropylene microfibre, giving soft touch, apart from great wear and fade resistance.


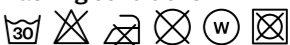
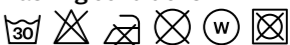
General Information	Specifications	Care
<p>Composition 49%PP 21%MA 16%CO REC 14%PES REC</p> <p>Width 140 + 4cm</p> <p>Weight 450 gr/m2 ± 5 % 630 gr/lm ± 5 %</p>	<p>Abrasion resistance (End point) 66.000 EN ISO 12947-2:1998</p> <p>Pilling resistance 4-5 EN ISO 12945/2:2000</p> <p>Lightfastness >6 EN ISO 105-B02:1998 and 105 B02/A01:2002</p>	<p>PERFORMANCE+ Easy to clean, longlasting fabrics</p> <p> Cleaning instructions</p> <p>Washing conditions </p> <p>Dimensional change domestic washing and drying (%) Warp: -1 / Weft: -1 EN ISO 3759:2008, EN ISO 6330:2000 and EN ISO 5077:2008</p>
<p>Sustainability</p> <ul style="list-style-type: none"> Life Cycle assessment data available. Double-woven with recycled fibre. In-house, closed-loop recycling of textile waste. In-house, circular water recycling. 100% electricity from renewable sources. 	<p>Ignitability*</p> <p>BS5852 Source 0 NFPA 260:2013 BS5852 Source 1 BS 7176 Low Hazard EN1021-Part 1:2006 UNI 9175 Clase 3IM EN1021-Part 2:2006 IMO Anexo 1 Parte 8 CAL TB 117:2013</p>	<p>Washing conditions </p> <p>Dimensional change domestic washing and drying (%) Warp: -2 / Weft: -1,5 EN ISO 3759:2008, EN ISO 6330:2000 and EN ISO 5077:2008</p>



*This fabric is also available in non Fr. Send your inquiry to: crevin@crevin.com

Drom-Fr

Using a low-pile chenille tightly interwoven into a dense weave, Drom reminds of natural canvas in rich linen tones.




General Information	Specifications	Care
<p>Composition 34%PES 23%PP 17%MA 13%CO REC 13%PES REC</p> <p>Width 140 + 4cm</p> <p>Weight 479 gr/m2 ± 5 % / 670 gr/lm ± 5 %</p>	<p>Abrasion resistance (End point) 50.000 EN ISO 12947-2:1998</p> <p>Pilling resistance 4-5 EN ISO 12945/2:2000</p> <p>Lightfastness 6-7 EN ISO 105-B02:1998 and 105 B02/A01:2002</p>	<p>PERFORMANCE+ Easy to clean, longlasting fabrics</p> <p> Cleaning instructions</p> <p>Washing conditions </p> <p>Dimensional change domestic washing and drying (%) Warp: -2 / Weft: -1,5 EN ISO 3759:2008, EN ISO 6330:2000 and EN ISO 5077:2008</p>
<p>Sustainability</p> <ul style="list-style-type: none"> Life Cycle assessment data available. Double-woven with recycled fibre. In-house, closed-loop recycling of textile waste. In-house, circular water recycling. 100% electricity from renewable sources. 	<p>Ignitability*</p> <p>BS5852 Source 0 NFPA 260:2013 BS5852 Source 1 BS 7176 Low Hazard EN1021-Part 1:2006 UNI 9175 Clase 3IM EN1021-Part 2:2006 IMO Anexo 1 Parte 8 CAL TB 117:2013</p>	<p>Washing conditions </p> <p>Dimensional change domestic washing and drying (%) Warp: -2 / Weft: -1,5 EN ISO 3759:2008, EN ISO 6330:2000 and EN ISO 5077:2008</p>



*This fabric is also available in non Fr. Send your inquiry to: crevin@crevin.com

Ito-Fr

A dense and wealthy weave highlights Ito's yarn, revealing rich earthy shades from light to dim in a subtle surface texture.




General Information	Specifications	Care
<p>Composition 49%PES 17%PP 13%MA 11%CO REC 10%PES REC</p> <p>Width 140 + 4cm</p> <p>Weight 618 gr/m2 ± 5 % / 865 gr/lm ± 5 %</p>	<p>Abrasion resistance (End point) >100.000 EN ISO 12947-2:1998</p> <p>Pilling resistance 4-5 EN ISO 12945/2:2000</p> <p>Lightfastness 5-6 EN ISO 105-B02:1998 and 105 B02/A01:2002</p>	<p>PERFORMANCE+ Easy to clean, longlasting fabrics</p>  <p>Cleaning instructions</p> <p>Washing conditions </p>
<p>Sustainability</p> <ul style="list-style-type: none"> Life Cycle assessment data available. Double-woven with recycled fibre. In-house, closed-loop recycling of textile waste. In-house, circular water recycling. 100% electricity from renewable sources. 	<p>Ignitability*</p> <p>BS5852 Source 0 NFPA 260:2013 BS5852 Source 1 BS 7176 Low Hazard EN1021-Part 1:2006 UNI 9175 Clase 3IM EN1021-Part 2:2006 CAL TB 117:2013</p>	<p>Dimensional change domestic washing and drying (%) Warp: -2,4 / Weft: -2,6 EN ISO 3759:2008, EN ISO 6330:2000 and EN ISO 5077:2008</p>
		

*This fabric is also available in non Fr. Send your inquiry to: crevin@crevin.com



Moulin-Fr




Composed of distinctly coloured yarns, Moulin creates shades that embrace each other in rustic, earthy textures.

General Information	Specifications	Care
<p>Composition 77%PP 10%PES REC 7%MA 6%CO REC</p> <p>Width 140 + 4cm</p> <p>Weight 568 gr/m2 ± 5 % 795 gr/lm ± 5 %</p>	<p>Abrasion resistance (End point) 80.000 EN ISO 12947-2:1998</p> <p>Pilling resistance 4-5 EN ISO 12945/2:2000</p> <p>Lightfastness >6 EN ISO 105-B02:1998 and 105 B02/A01:2002</p>	<p>PERFORMANCE+ Easy to clean, longlasting fabrics</p>  <p>Cleaning instructions</p> <p>Washing conditions </p>
<p>Sustainability</p> <ul style="list-style-type: none"> Life Cycle assessment data available. Double-woven with recycled fibre. In-house, closed-loop recycling of textile waste. In-house, circular water recycling. 100% electricity from renewable sources. 	<p>Ignitability*</p> <p>BS5852 Source 0 NFPA 260:2013 BS5852 Source 1 BS 7176 Low Hazard EN1021-Part 1:2006 UNI 9175 Clase 3IM EN1021-Part 2:2006 CAL TB 117:2013</p>	<p>Dimensional change domestic washing and drying (%) Warp: -3 / Weft: -2 EN ISO 3759:2008, EN ISO 6330:2000 and EN ISO 5077:2008</p>
		

*This fabric is also available in non Fr. Send your inquiry to: crevin@crevin.com

Sorra-Fr

Sorra is the return to old-school craftsmanship. The grainy texture of a custom yarn brings the flair of artisanal quality.




General Information	Specifications	Care
<p>Composition 59%PES 21%PES REC 11%MA 9%CO REC</p> <p>Width 140 + 4cm</p> <p>Weight 640 gr/m2 ± 5 % 896 gr/lm ± 5 %</p>	<p>Abrasion resistance (End point) 80.000 EN ISO 12947-2:1998</p> <p>Pilling resistance 4-5 EN ISO 12945/2:2000</p> <p>Lightfastness 5-6 EN ISO 105-B02:1998 and 105 B02/A01:2002</p>	<p>PERFORMANCE+ Easy to clean, longlasting fabrics</p>  <p>Cleaning instructions</p> <p>Washing conditions </p> <p>Dimensional change domestic washing and drying (%) Warp: -1 / Weft: -1 EN ISO 3759:2008, EN ISO 6330:2000 and EN ISO 5077:2008</p>
<p>Sustainability</p> <ul style="list-style-type: none"> Life Cycle assessment data available. Double-woven with recycled fibre. In-house, closed-loop recycling of textile waste. In-house, circular water recycling. 100% electricity from renewable sources. 	<p>Ignitability*</p> <p>BS5852 Source 0 NFPA 260:2013 BS5852 Source 1 BS 7176 Low Hazard EN1021-Part 1:2006 UNI 9175 Clase 3IM EN1021-Part 2:2006 CAL TB 117:2013</p>	
		

*This fabric is also available in non Fr. Send your inquiry to: crevin@crevin.com



Sublim-Fr













Sublim is a high-performing basic with a subtle jacquard pattern, presented in a range of 26 colours.

General Information	Specifications	Care
<p>Composition 78%PES 12%MA 10%CO REC</p> <p>Width 140 + 4cm</p> <p>Weight 432 gr/m2 ± 5 % 605 gr/lm ± 5 %</p>	<p>Abrasion resistance (End point) 80.000 EN ISO 12947-2:1998</p> <p>Pilling resistance 5 EN ISO 12945/2:2000</p> <p>Lightfastness 5-6 EN ISO 105-B02:1998 and 105 B02/A01:2002</p>	<p>PERFORMANCE+ Easy to clean, longlasting fabrics</p>  <p>Cleaning instructions</p> <p>Washing conditions </p> <p>Dimensional change domestic washing and drying (%) Warp: -2 / Weft: -3 EN ISO 3759:2008, EN ISO 6330:2000 and EN ISO 5077:2008</p>
<p>Sustainability</p> <ul style="list-style-type: none"> Life Cycle assessment data available. Double-woven with recycled fibre. In-house, closed-loop recycling of textile waste. In-house, circular water recycling. 100% electricity from renewable sources. 	<p>Ignitability*</p> <p>BS5852 Source 0 NFPA 260:2013 BS5852 Source 1 BS 7176 Low Hazard EN1021-Part 1:2006 UNI 9175 Clase 3IM EN1021-Part 2:2006 IMO Annex 1 Part 8 CAL TB 117:2013</p>	
		

*This fabric is also available in non Fr. Send your inquiry to: crevin@crevin.com

Velvety-Fr

Velvety is a piece-dyed velvet lookalike with an extraordinary performance, available in a wide variety of colours.

General Information	Specifications	Care
<p>Composition 74%PES 12%PES REC 7%CO REC 7%MA</p> <p>Width 140 + 4cm</p> <p>Weight 571 gr/m2 ± 5 % 800 gr/lm ± 5 %</p>	<p>Abrasion resistance (End point) 200.000 EN ISO 12947-2:1998</p> <p>Pilling resistance 5 EN ISO 12945/2:2000</p> <p>Lightfastness 5-6 EN ISO 105-B02:1998 and 105 B02/A01:2002</p>	<p>PERFORMANCE+ Easy to clean, longlasting fabrics</p> <p> Cleaning instructions</p> <p>Washing conditions </p> <p>Dimensional change domestic washing and drying (%) Warp: -1,6 / Weft: -2 EN ISO 3759:2008, EN ISO 6330:2000 and EN ISO 5077:2008</p>
<p>Sustainability</p> <ul style="list-style-type: none"> • Life Cycle assessment data available. • Double-woven with recycled fibre. • In-house, closed-loop recycling of textile waste. • In-house, circular water recycling. • 100% electricity from renewable sources. 	<p>Ignitability*</p> <p>BS5852 Source 0 NFPA 260:2013 BS5852 Source 1 BS 7176 Low Hazard EN1021-Part 1:2006 UNI 9175 Clase 3IM EN1021-Part 2:2006 IMO Anexo 1 Parte 8 CAL TB 117:2013</p>	
<p>         </p>		

*This fabric is also available in non Fr. Send your inquiry to: crevin@crevin.com



Designed

and

Crafted

We design, we weave, we dye, we finish.
In short, we create. Our expertise comes from understanding every aspect of fabrics.

We are born and bred in Terrassa, a small town close to Barcelona and home to innovative textile production since the late 19th century.

It continues to be a place of respect for tradition, people and excellence in cultivating sustainable technologies.

www.crevin.com

in Terrassa

crevin

(Barcelona)