

Designed

and

Crafted

# Texturas

in Terrassa

**crevin**

(Barcelona)

# Road to zero



**crevin**

More than 70.000 kg of textile waste is saved from landfill or incineration every year.

70% of our wastewater is reused every day.

27.200 kg of CO<sub>2</sub> emissions are avoided every year.



Scan to see how we do it.

**PERFORMANCE+**

Easy to clean, long-lasting fabrics

When every day  
is so demanding,  
you need a fabric  
that takes care of you.

**crevin**

What are the benefits of a PERFORMANCE+ fabric?

# EASY TO CLEAN

Never be worried  
about staining and soiling.

# LONG- LASTING

High-quality upholstery fabrics  
designed for life.

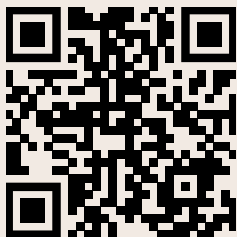
# MACHINE- WASHABLE

Removable covers are  
machine-washable at 30°C.

# 5-YEAR GUARANTEE\*

Backed by a 5-year guarantee  
against wear and tear.

\* Download the guarantee T&C  
at [crevin.com](http://crevin.com)



For full cleaning instructions, please visit:  
[crevin.com/performance+](http://crevin.com/performance+)



Designed

and

Crafted



in Terrassa

**crevin**

(Barcelona)

Only great fabrics have  
a story to tell

## DESIGN FOR A BETTER WORLD

As fabric makers we think of living and working spaces as places of beauty and comfort. Durability and sustainability stand firmly at the center of our design.

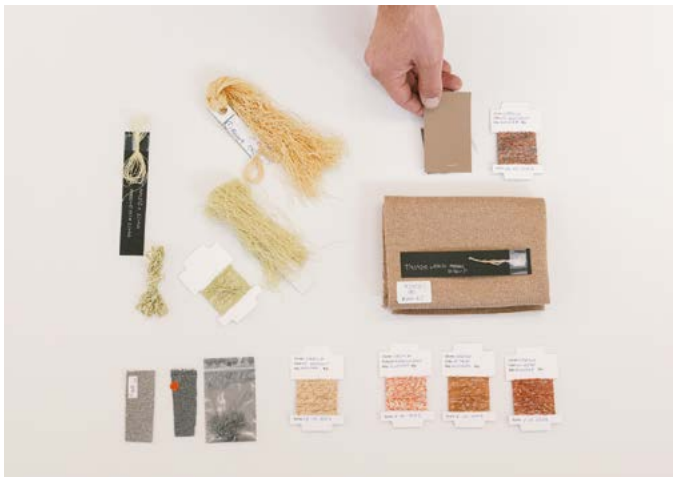


## LOCAL

Our mill is a bustling, free-spirited playground of creativity, joy and mindfulness. Here is where all our fabrics come to life. Our whereabouts - the Mediterranean, where colour, light and a positive attitude towards life play a prominent role- are the heart and soul of our brand.

## AUTHENTICITY

Made from custom-spun yarns and recycled materials, Crevin fabrics are defined by a distinctive aesthetic and a fresh take on contemporary design.



## SUSTAINABLE DNA

Now more than ever we are convinced that local production, longevity, and use of recycled materials are the greatest sources of inspiration and drivers for positive change.



This is why we are sustainable

## CONTROL OVER OWN PRODUCTION

# 01

We are totally vertical from the design of yarn, product development, weaving, dyeing, and finishing up to the dispatch of finished rolls. We work strictly local, with our own people and suppliers from our whereabouts.



## RESOURCE-FRIENDLINESS

# 02

Since 2010 our manufacturing process is certified under ISO 14001, a management system that compiles written principles for maximizing resource efficiency and pollution control. In 2014, we implemented a closed-loop recycling process that converts all our textile waste into new yarn. From 2024 our mill is certified after OEKO-TEX® Made in Green, which is a traceable product label, accompanied by a QR code, for textiles that are manufactured in environmentally and human friendly facilities. In 2025, our mill acquired the Zero Waste certification by AENOR, evidencing that the production of our fabrics does not generate any waste.

## SUSTAINABILITY BY DESIGN

# 03

Our creative process starts with considering materials, construction, processes, and the lifecycle of fabrics. We guarantee quality and aesthetics by using custom-made yarns from local partners, while diminishing transport and emissions. For more durability, we construct our fabrics in two interwoven layers, which enables us to use recycled materials in all our designs, including yarn made from our own manufacturing waste.

## PERFORMANCE WITHOUT ADDING CHEMICALS

# 04

Crevin fabrics are double-woven, rendering unnecessary any form of backings or coatings, and are certified under STANDARD 100 by OEKO-TEX®, which guarantees that no substances are used that may cause a threat to the human health or environment. Crevin has totally abandoned the use of PFAS from their production. Under our quality seal **PERFORMANCE+** we offer easy stain and soil release by means of a cleaning agent commonly used in detergents.





## LIFE CYCLE ASSESSMENT

# 06

The annual CO<sub>2</sub> and water footprints of each of our fabrics are expressed in Life Cycle Assessment (LCA) data, provided by the textile engineering faculty of the Universitat Politècnica de Catalunya (UPC). LCA data make it possible to measure environmental impact and reduce negative effects every year, while providing sustainability performance information to customers and end-users.

## ROAD TO ZERO

# 05

Our Road to Zero is our ambitious journey towards zero-impact in textiles. It is built around zero-waste, zero-water, and zero-CO<sub>2</sub>, and compiles all actions towards our goal of achieving zero-impact by 2030. Apart from a blueprint, our Road to Zero is an interactive framework to engage suppliers, local artisans, and customers into contributing positively to climate change and help end-users with making well-informed purchase decisions.

Read about our Road to Zero:  
[crevin.com/roadtozero](https://crevin.com/roadtozero)





crevin.com



Earth tones connect us with the essence of nature and the stability of the ground beneath our feet. These warm and welcoming hues evoke a deep sense of harmony and balance. Surrounding ourselves with the colours of the earth, we feel an ancestral peace and a connection to the secrets of life. They invite us to find beauty in the natural world and to live in tune with our surroundings.

# Harmony

crevin

crevin

Harmony



Duo N°01



Moulin N°05



Drom N°06



Sublim N°01



Moulin N°07



Duo N°02



Sublim N°02



Salvia N°12



Sublim N°05



Club N°11



Moulin N°10



Drom N°02



Granit N°01



Salvia N°10



Granit N°05



Club N°10



Granit N°08



Drom N°10



Salvia N°05



Gres N°02



Duo N°08



Gres N°07



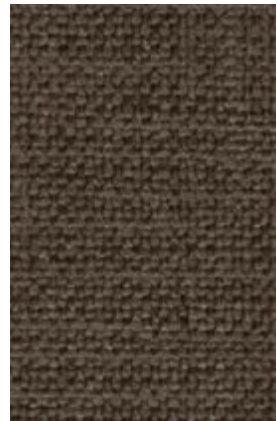
Drom N°04



Sublim N°11



Salvia N°08



Club N°12



Gres N°11



Drom N°11



Salvia N°02



Club N°05



Drom N°09



Granit N°07



Club N°08



Salvia N°04



Gres N°12



Sublim N°12



Duo N°17

Warm colours radiate energy and enthusiasm, filling us with a vibrant sense of vitality. These luminous tones invite us to live with passion and joy, in celebration of each special moment. Surrounding ourselves with warm hues awakens our spirit and makes us feel more alive and motivated. They inspire us to act with confidence and determination, embracing life with the utmost intensity.

# Vitality

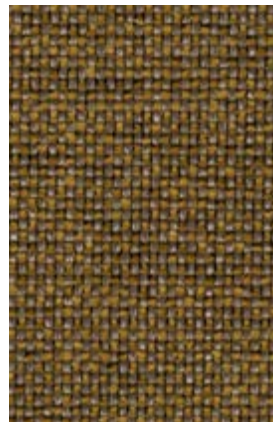
crevin

crevin

Vitality



Drom N° 19



Drom N° 16



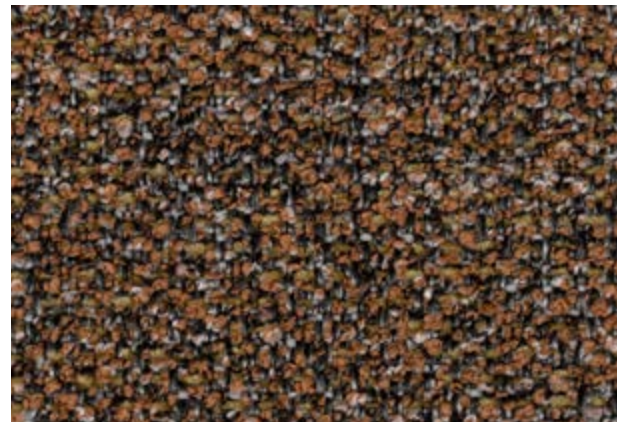
Duo N° 16



Salvia N° 29



Sublim N° 26



Granit N° 26



Salvia N° 61



Club N° 161



Gres N° 61



Club N° 119



Sublim N° 16



Moulin N° 20



Gres N° 26



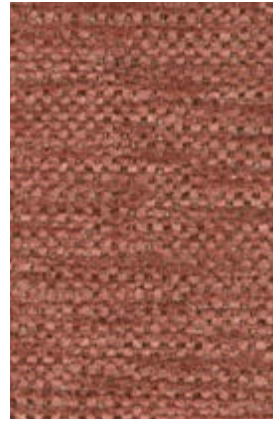
Duo N° 21



Drom N° 26



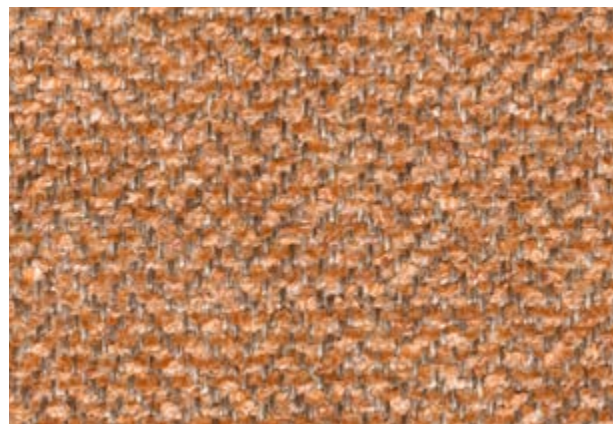
Sublim N° 71



Sublim N° 62



Gres N° 21



Gres N° 20



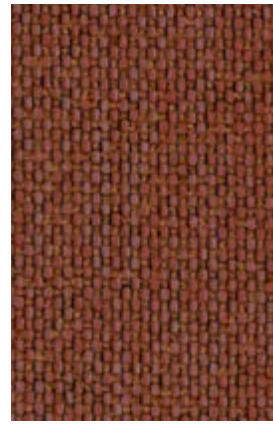
Club N° 129



Sublim N° 19



Salvia N° 21



Drom N° 27



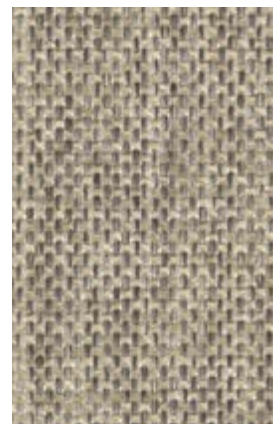
Duo N° 26



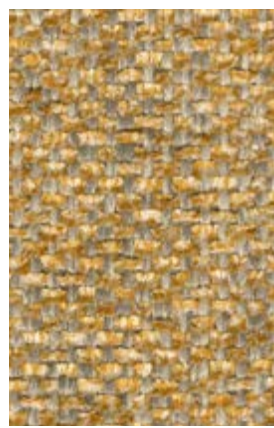
Duo N° 64



Club N° 164



Drom N° 13



Salvia N° 20



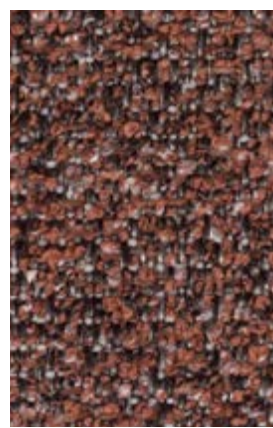
Duo N° 13



Moulin N° 26



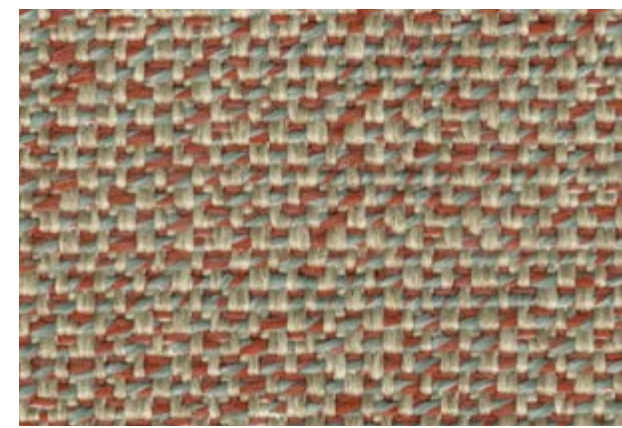
Drom N° 62



Granit N° 21



Club N° 171



Moulin N° 62



Sublim N° 64

Cool colours, such as blue and green, envelop us in serene calmness, inviting introspection and mental clarity. Observing a blue sky or a green meadow we find a refuge of peace that connects us to our deepest essence. These soft and refreshing tones remind us of the importance of quietness and balance in our hectic lives. Through them we cultivate greater awareness and a deeper appreciation of the present. Let cool colors guide you toward inner tranquility and a stronger connection with your inner self.

# Conscience

crevin

crevin

Conscience



Moulin N° 38



Drom N° 31



Salvia N° 07



Moulin N° 33



Drom N° 34



Salvia N° 11



Sublim N° 40



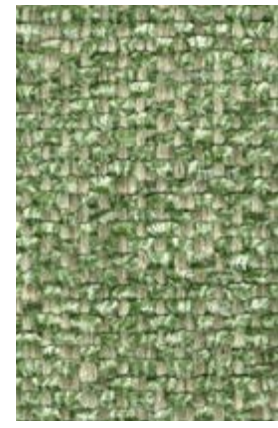
Duo N° 42



Club N° 139



Club N° 132



Salvia N° 30



Sublim N° 33



Sublim N° 34



Granit N° 33



Club N° 140



Granit N° 45



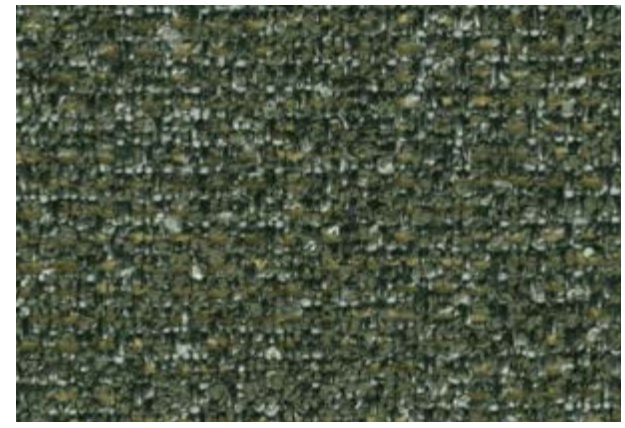
Club N° 143



Sublim N° 32



Drom N° 15



Granit N° 32



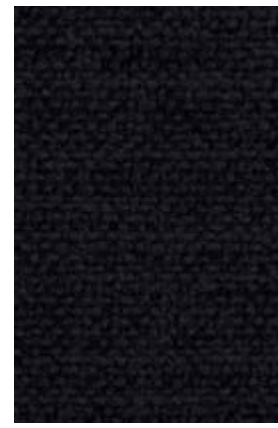
Salvia N° 35



Club N° 35



Duo N° 34



Club N° 47



Gres N° 45



Club N° 51



Club N° 142



Gres N° 38



Drom N° 30



Sublim N° 75



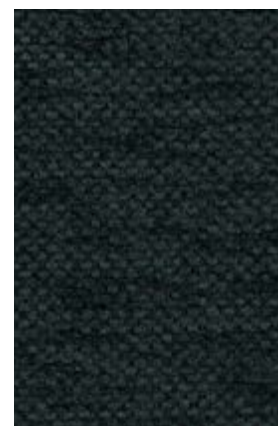
Gres N° 33



Club N° 07



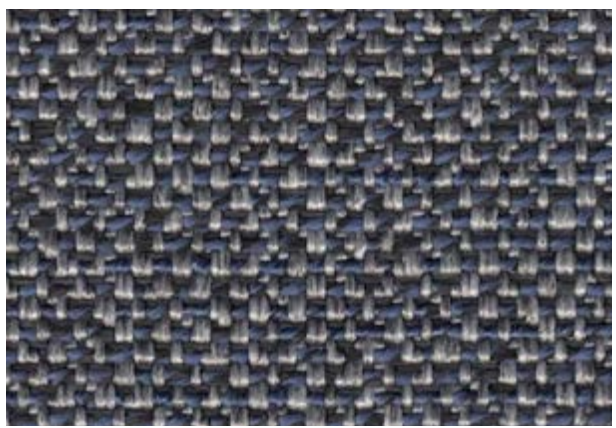
Salvia N° 38



Sublim N° 45



Drom N° 45



Moulin N° 47

Gray colours, with their subtle elegance, awaken feelings of serenity and mindfulness. These neutral and sophisticated tones invite reflection and a quest for peace through simplicity. Gray reminds us that in quiet and balance, we find clarity and inner strength. It inspires us to appreciate moments of tranquility and connect with our deepest essence.

# Serenity

crevin

crevin



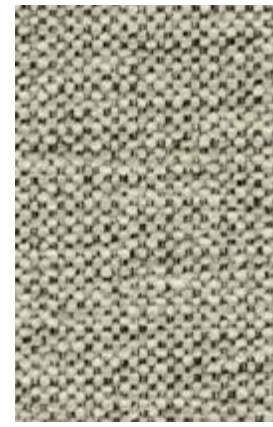
Drom N° 50



Moulin N° 51



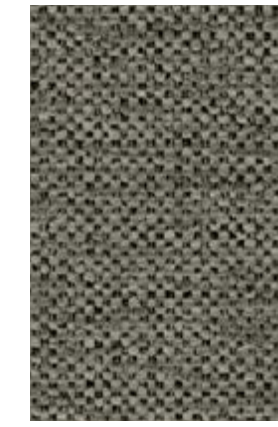
Duo N° 05



Sublim N° 50



Granit N° 54



Sublim N° 54



Duo N° 51



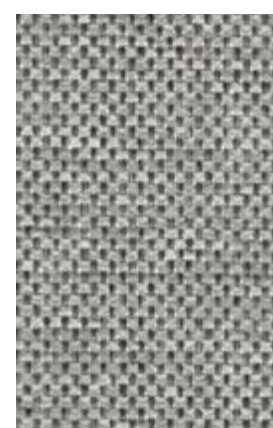
Club N° 53



Moulin N° 54



Salvia N° 50



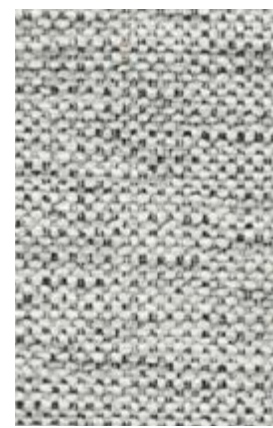
Drom N° 59



Duo N° 80



Salvia N° 59



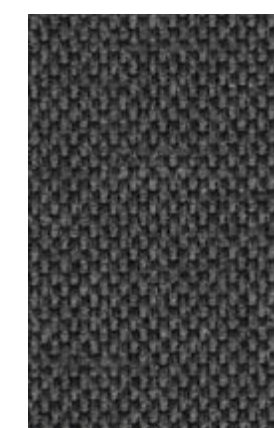
Sublim N° 51



Gres N° 52



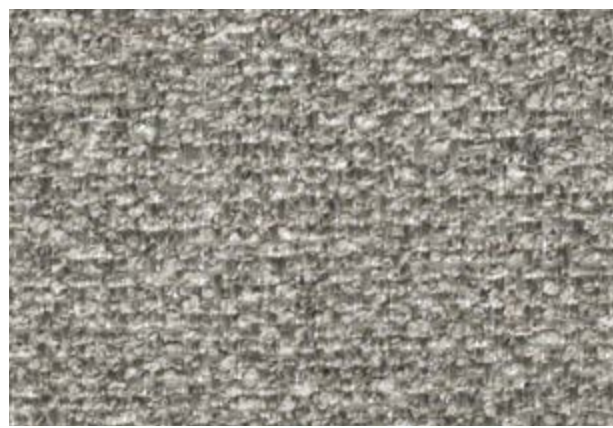
Duo N° 59



Drom N° 54



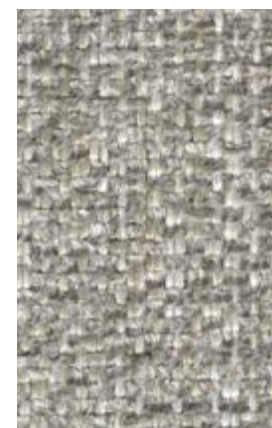
Moulin N° 52



Granit N° 51



Club N° 54



Salvia N° 51



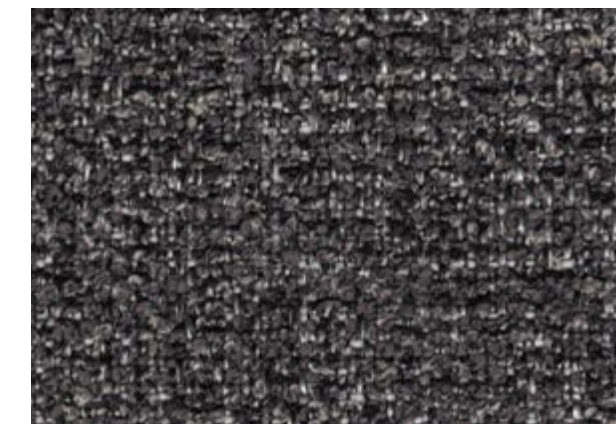
Club N° 52



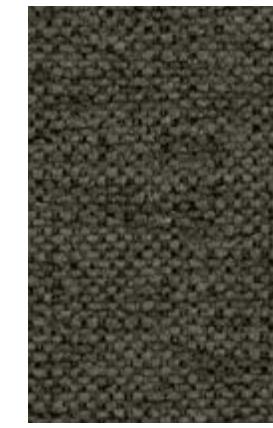
Moulin N° 50



Drom N° 51



Granit N° 53



Sublim N° 52



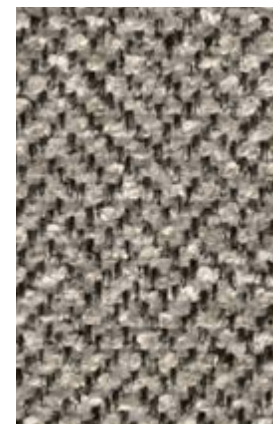
Duo N° 55



Sublim N° 07



Drom N° 52



Gres N° 54



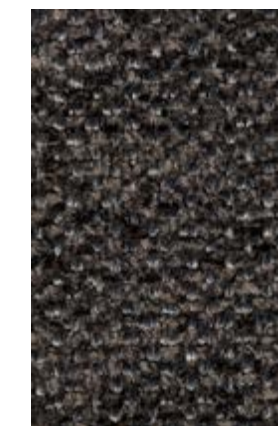
Granit N° 52



Drom N° 75



Duo N° 53



Salvia N° 53



Sublim N° 53



Duo N° 83

# Club

By emphasizing simplicity and a welcoming aesthetic, Club brings a sense of calm to upholstered furniture. A subtle jacquard pattern mimics the irregularities of natural fiber, while a blend of matte and lustrous chenille offers unrivalled touch and great functionality.

Club's new colour directions, featuring lemon, orange, pine green, and turquoise, transform modern interiors into vibrant and inviting spaces that reflect personal style.

crevin

# Club



Characteristics	<b>PERFORMANCE+</b>	
Sustainability	43% recycled fiber	
Composition	50%PES 35%PES REC 8%CO REC 7%CO	
Width	140 + 4 cm	
Weight	740 gr/lm ± 5%	
Seam slippage resistance (mm) EN ISO 13936/2	Warp	2,50
	Weft	2,33
Abrasion resistance	End Point	80.000
	Fully worn off EN ISO 12947/2	30.000
	Change aspect 3000c EN ISO 12947/4 / EN 14465 (Annex A)	4 – 5
Pilling resistance EN ISO 12945/2		4 – 5
Assessment of ignitability* <small>*Upon request: BS5852 Source 1, EN1021-Part 2:2006, BS 7176 Low Hazard, UNI 9175 Classe 3IM</small>	BS5852 Source 0 EN 1021 Part 1 CAL TB 117 NFPA 260	Pass
Lightfastness EN ISO 105-B02 / EN ISO 105 B02/A01		5 – 6
Colour fastness to rubbing EN ISO 105-X12	Dry	4 – 5
	Wet	4 – 5
Dimensional change domestic washing and drying (%) EN ISO 3759 / EN ISO 6330 / EN ISO 5077	Warp	-2%
	Weft	-3%
Washing conditions		

Designed and Crafted in Terrassa (Barcelona)

[www.crevin.com](http://www.crevin.com)



Data Sheet



crevin

Club



N°05



N°07



N°10



N°139



N°132



N°134



N°11



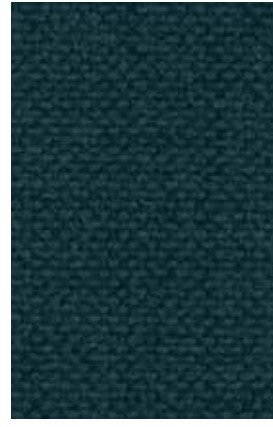
N°08



N°12



N°142



N°143



N°35



N°20



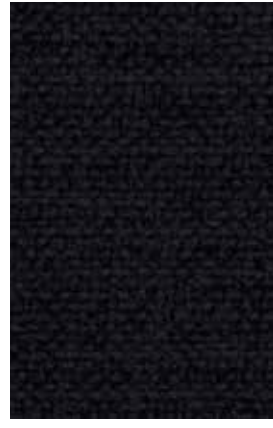
N°119



N°129



N°140



N°47



N°51



N°161



N°171



N°164



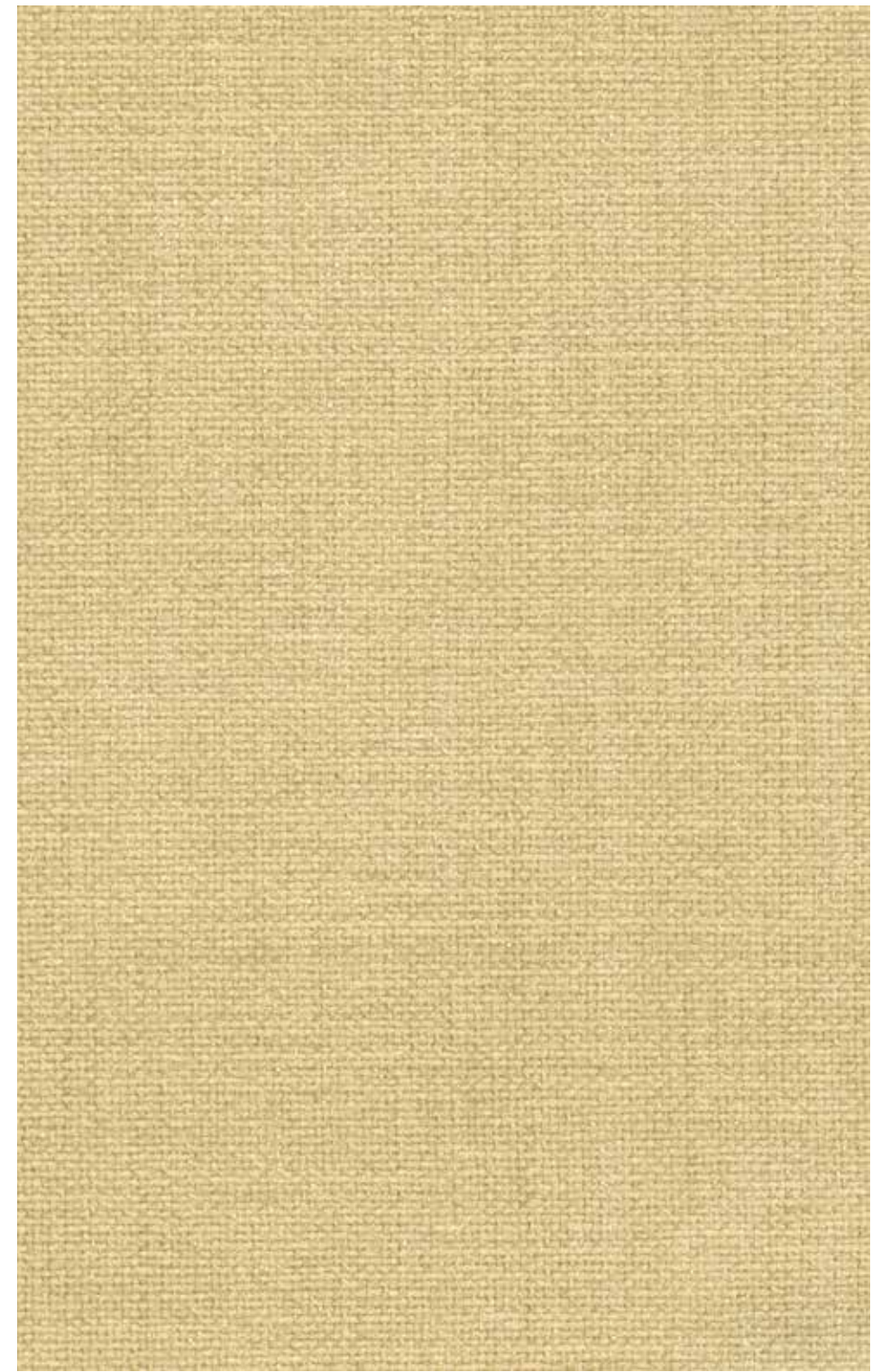
N°54



N°52



N°53



N°119

# Drom

A perfect marriage of simple beauty and great utility, Drom blends clean forms with a calming aesthetic. Using a low-pile chenille tightly interwoven into a dense weave, Drom offers a strong and lasting quality that reminds of natural canvas. Rich linen tones are accompanied by leafy greens, soft woody tones and earthy shades, breathing the warmth of the Mediterranean forest.

A vibrant, subtly sparkling effect add depth and luminosity to the fabric's surface, as touched by an imaginary sunset.

crevin

# Drom



Characteristics	<b>PERFORMANCE+</b>	
Sustainability	54% recycled fiber	
Composition	54%PES REC 26%PP 20%PES	
Width	140 + 4 cm	
Weight	630 gr/lm ± 5%	
Seam slippage resistance (mm) EN ISO 13936/2	Warp	3,80
	Weft	3,90
Abrasion resistance	End Point EN ISO 12947/2	50.000
	Change aspect 3000c EN ISO 12947/4 / EN 14485 (Annex A)	4 – 5
Pilling resistance EN ISO 12945/2		4 – 5
Assessment of ignitability* <small>*Upon request: BS5852 Source 1, EN1021-Part 2:2006, BS 7176 Low Hazard, UNI 9175 Classe 3IM</small>	BS5852 Source 0 EN 1021 Part 1 CAL TB 117 NFPA 260	Pass
Lightfastness EN ISO 105-B02 / EN ISO 105 B02/A01		6 – 7
Colour fastness to rubbing EN ISO 105-X12	Dry	4 – 5
	Wet	4 – 5
Dimensional change domestic washing and drying (%) EN ISO 3769 / EN ISO 6330 / EN ISO 5077	Warp	-2%
	Weft	-1,5%
Washing conditions		

Designed and Crafted in Terrassa (Barcelona)

[www.crevin.com](http://www.crevin.com)



Data Sheet



crevin



N°02



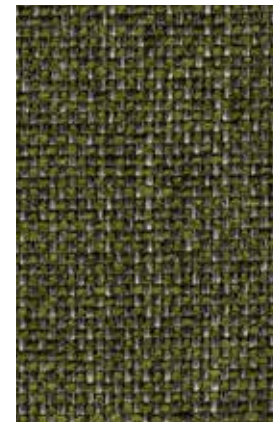
N°06



N°09



N°34



N°31



N°30



N°04



N°13



N°11



N°10



N°40



N°43



N°45



N°19



N°16



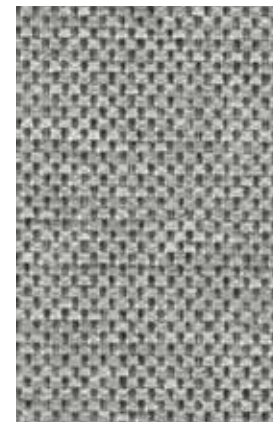
N°15



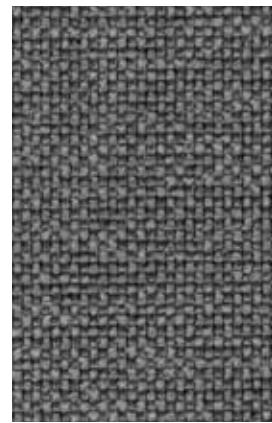
N°26



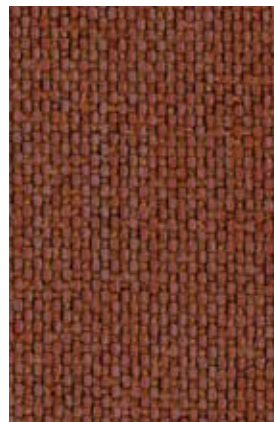
N°50



N°59



N°52



N°27



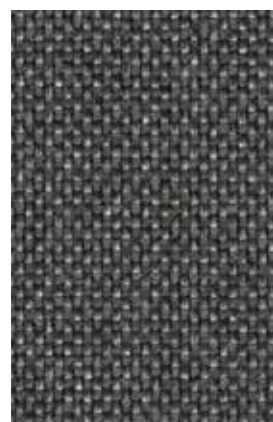
N°62



N°71



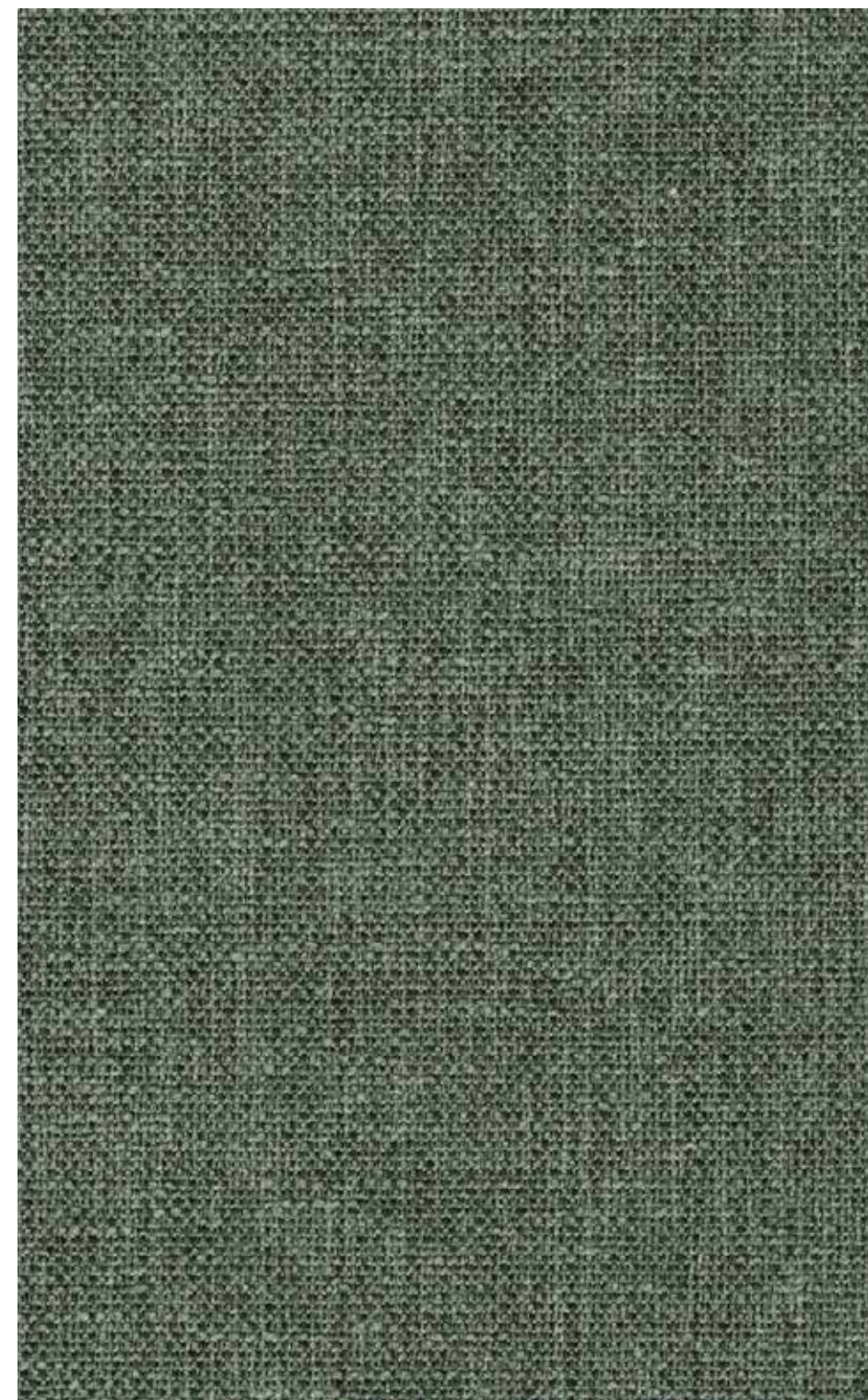
N°75



N°51



N°54



N°34



Duo



N°05



N°01



N°02



N°04



N°07



N°30



N°34



N°11



N°16



N°18



N°10



N°42



N°43



N°26



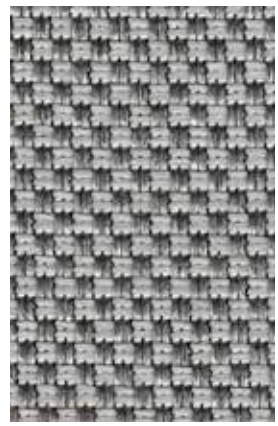
N°17



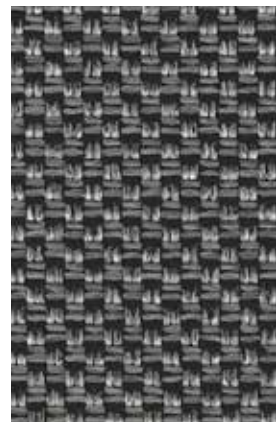
N°08



N°13



N°80



N°51



N°53



N°21



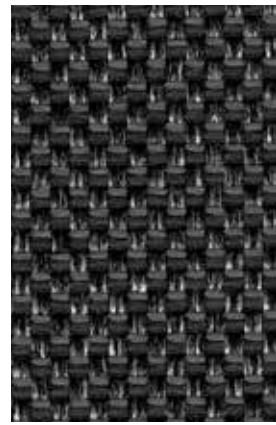
N°61



N°64



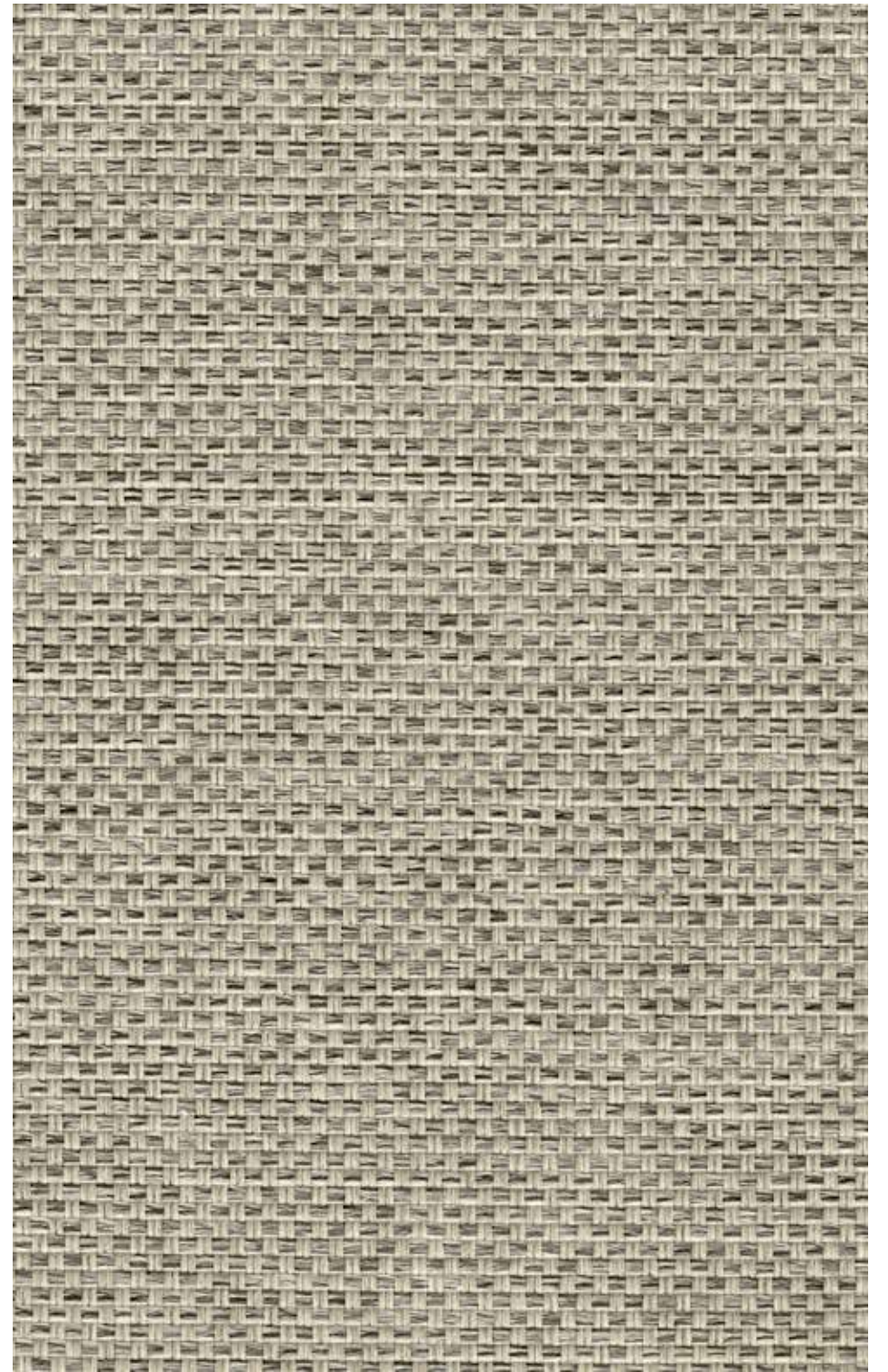
N°83



N°59



N°55



N°11

# Granit

By shaping four different recycled materials into organic shapes reminiscent of stone sediments, Granit sets a new standard in sustainable design. With a careful balance of no-impact materials using minimal reprocessing and no chemical additives, Granit has been designed for longevity, functionality and the ability to grow more beautiful with age.

Embracing texture and colour as integral design elements, Granit tells a story of discarded materials brought back to a beautiful new life.

crevin

# Granit



Characteristics	<b>PERFORMANCE+</b>	
Sustainability	90% recycled fiber	
Composition	58%PES REC 28%PP REC 10%PES 2%CO REC 2%OF REC	
Width	140 + 4 cm	
Weight	775 gr/lm ± 5%	
Seam slippage resistance (mm) <small>EN ISO 13936/2</small>	Warp	1,50
	Weft	2,00
Abrasion resistance	End Point <small>EN ISO 12947/2</small>	50.000
	Change aspect 3000c <small>EN ISO 12947/4 / EN 14485 (Annex A)</small>	4 – 5
Pilling resistance <small>EN ISO 12945/2</small>		4 – 5
Assessment of ignitability* <small>*Upon request: BS5852 Source 1, EN1021-Part 2:2006, BS 7176 Low Hazard, UNI 9175 Classe 3IM</small>	BS5852 Source 0 EN 1021 Part 1 CAL TB 117 NFPA 260	Pass
Lightfastness <small>EN ISO 105-B02 / EN ISO 105 B02/A01</small>		5 – 6
Colour fastness to rubbing <small>EN ISO 105-X12</small>	Dry	4 – 5
	Wet	4 – 5
Dimensional change domestic washing and drying (%) <small>EN ISO 3759 / EN ISO 6330 / EN ISO 5077</small>	Warp	-3%
	Weft	-3%
Washing conditions		

Designed and Crafted in Terrassa (Barcelona)

[www.crevin.com](http://www.crevin.com)



crevin

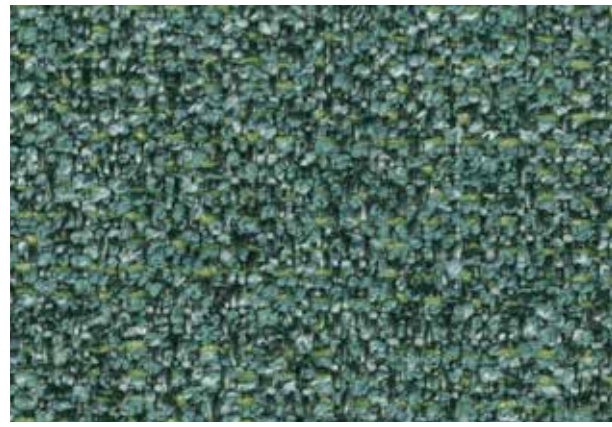
Granit



N°01



N°32



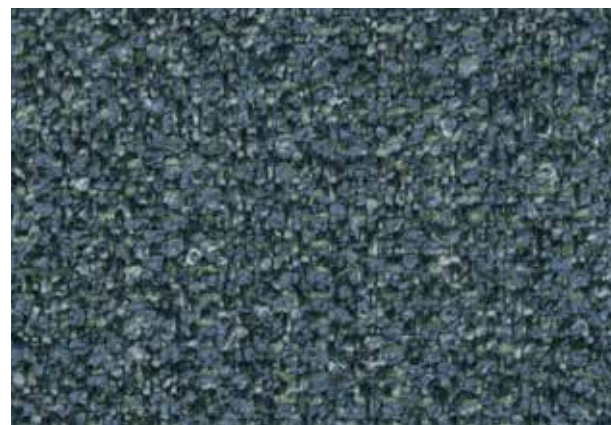
N°33



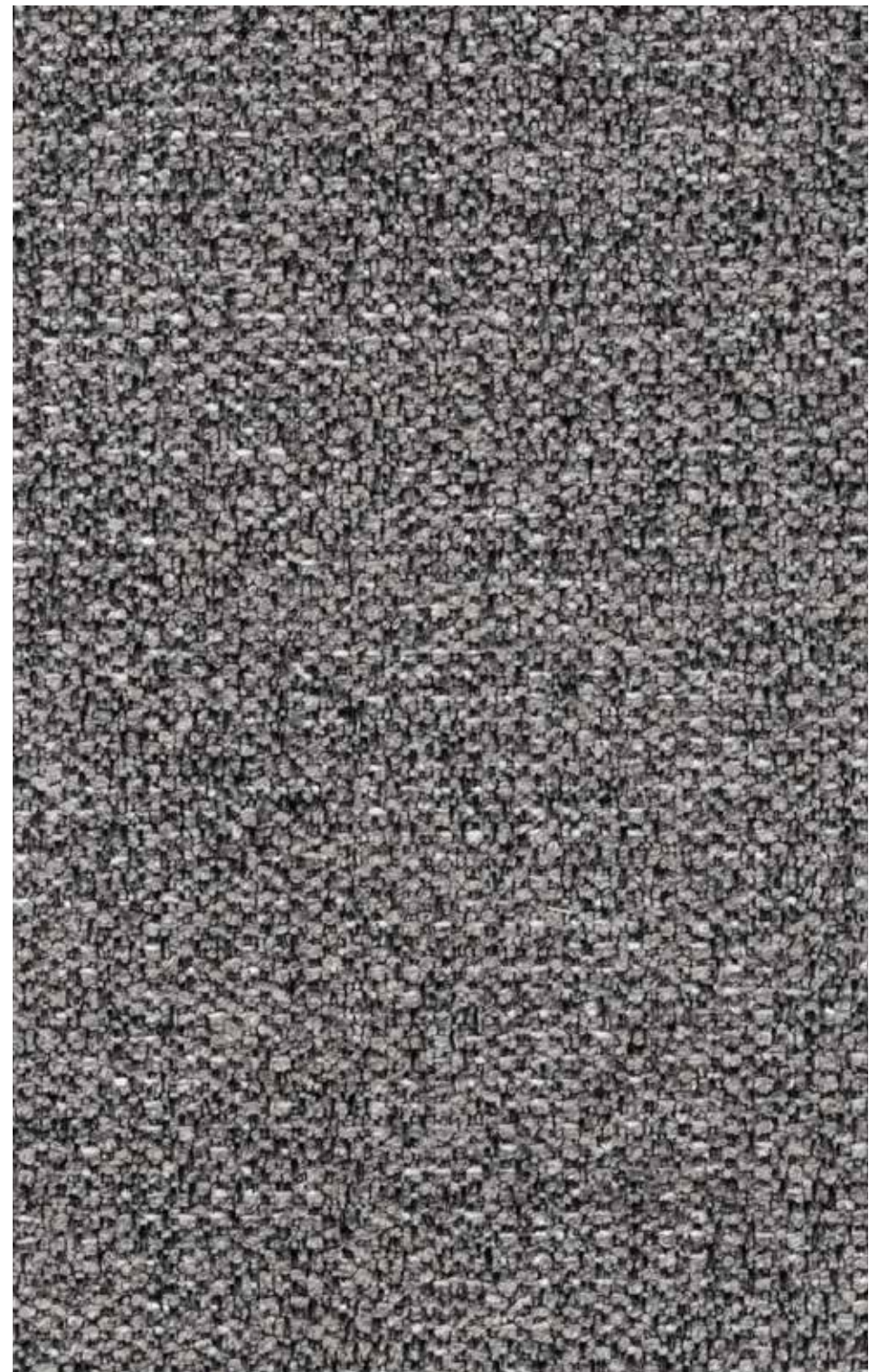
N°05



N°07



N°45



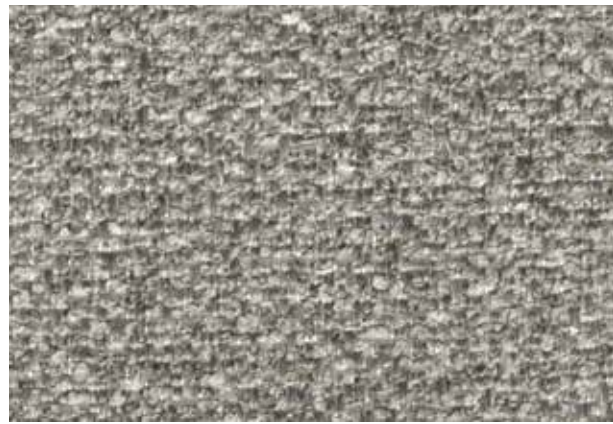
N°54



N°08



N°12



N°51



N°52



N°21



N°26



N°54



N°53

# Gres

The jacquard Gres reminds of handmade hydraulic tiles and captures the essence of decorative beauty. Gres' geometric pattern, reminiscent of a herringbone, is modernized by turning it into what appears to be a faux plain at distance.

With the help of naturally inspired tonal contrasts like grays with hints of pearl, oranges with notes of tangerine, a blue misty sky with spotty clouds, a sunset with a breeze of sand, Gres reveals an expressive composition materialized in pattern and colour.

crevin

# Gres



Characteristics	<b>PERFORMANCE+</b>	
Sustainability	83% recycled fiber	
Composition	49%PES REC 21%PP REC 17%PES 7%CO REC 6%OF	
Width	140 + 4 cm	
Weight	695 gr/lm ± 5%	
Seam slippage resistance (mm) <small>EN ISO 13936/2</small>	Warp	2,20
	Weft	1,90
Abrasion resistance	End Point <small>EN ISO 12947/2</small>	50.000
Pilling resistance <small>EN ISO 12945/2</small>		4 – 5
Assessment of ignitability* <small>*Upon request: BS5852 Source 1, EN1021-Part 2:2006, BS 7176 Low Hazard, UNI 9175 Classe 3IM</small>	BS5852 Source 0 EN 1021 Part 1 CAL TB 117 NFPA 260	Pass
Lightfastness <small>EN ISO 105-B02 / EN ISO 105 B02/A01</small>		5 – 6
Dimensional change domestic washing and drying (%) <small>EN ISO 3769 / EN ISO 6330 / EN ISO 6077</small>	Warp	-2%
	Weft	-2%
Washing conditions		

Designed and Crafted in Terrassa (Barcelona)

[www.crevin.com](http://www.crevin.com)



Data Sheet



crevin



N°02



N°05



N°11



N°12



N°07



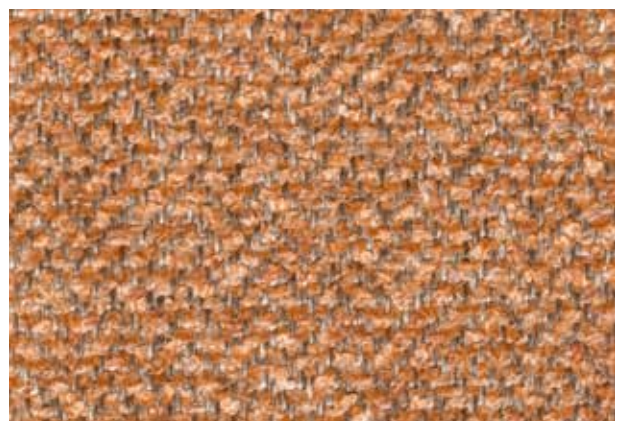
N°10



N°33



N°38



N°20



N°26



N°45



N°61



N°21



N°54



N°52



N°02

# Moulin

The design concept of Moulin is built around a particular yarn called mouliné, which combines multiple threads in contrasting colours. Paying tribute to textile artistry, Moulin is the perfect option for interior designers who look at combining modern décor and rusticity.

Rich colour blends create shades that embrace each other in earthy textures with a hint of imperfection giving a unique touch to contemporary interior spaces.

crevin

# Moulin



Characteristics	<b>PERFORMANCE+</b>	
Sustainability	20% recycled fiber	
Composition	80%PP 14%PES REC 3%CO REC 3%OF REC	
Width	140 + 4 cm	
Weight	770 gr/lm ± 5%	
Seam slippage resistance (mm) EN ISO 13936/2	Warp	2,50
	Weft	2,00
Abrasion resistance	End Point EN ISO 12947/2	80.000
Pilling resistance EN ISO 12945/2		4 – 5
Assessment of ignitability* <small>*Upon request: BS5852 Source 1, EN1021-Part 2:2006, BS 7176 Low Hazard, UNI 9175 Classe 3IM</small>	BS5852 Source 0 EN 1021 Part 1 CAL TB 117 NFPA 260	Pass
Lightfastness EN ISO 105-B02 / EN ISO 105 B02/A01		>6
Colour fastness to rubbing EN ISO 105-X12	Dry	4 – 5
	Wet	4 – 5
Dimensional change domestic washing and drying (%) EN ISO 3759 / EN ISO 6330 / EN ISO 5077	Warp	-3%
	Weft	-2%
Washing conditions		

Designed and Crafted in Terrassa (Barcelona)

[www.crevin.com](http://www.crevin.com)



Data Sheet

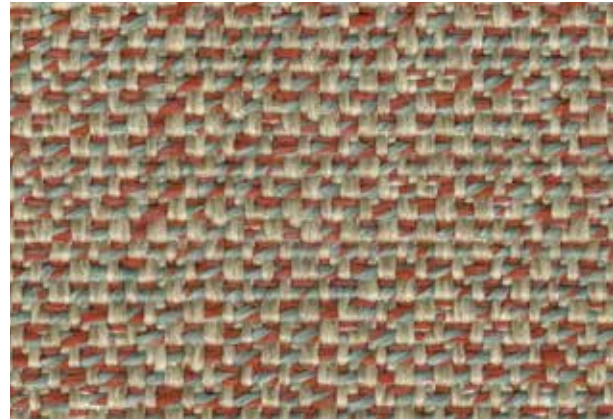


crevin

Moulin



N°20



N°62



N°51



N°07



N°05



N°54



N°26



N°50



N°33



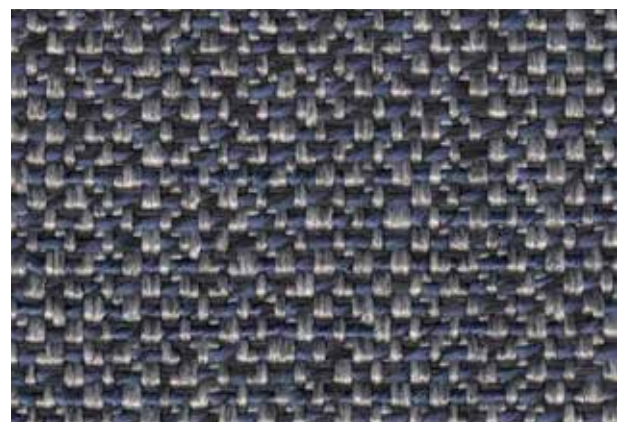
N°10



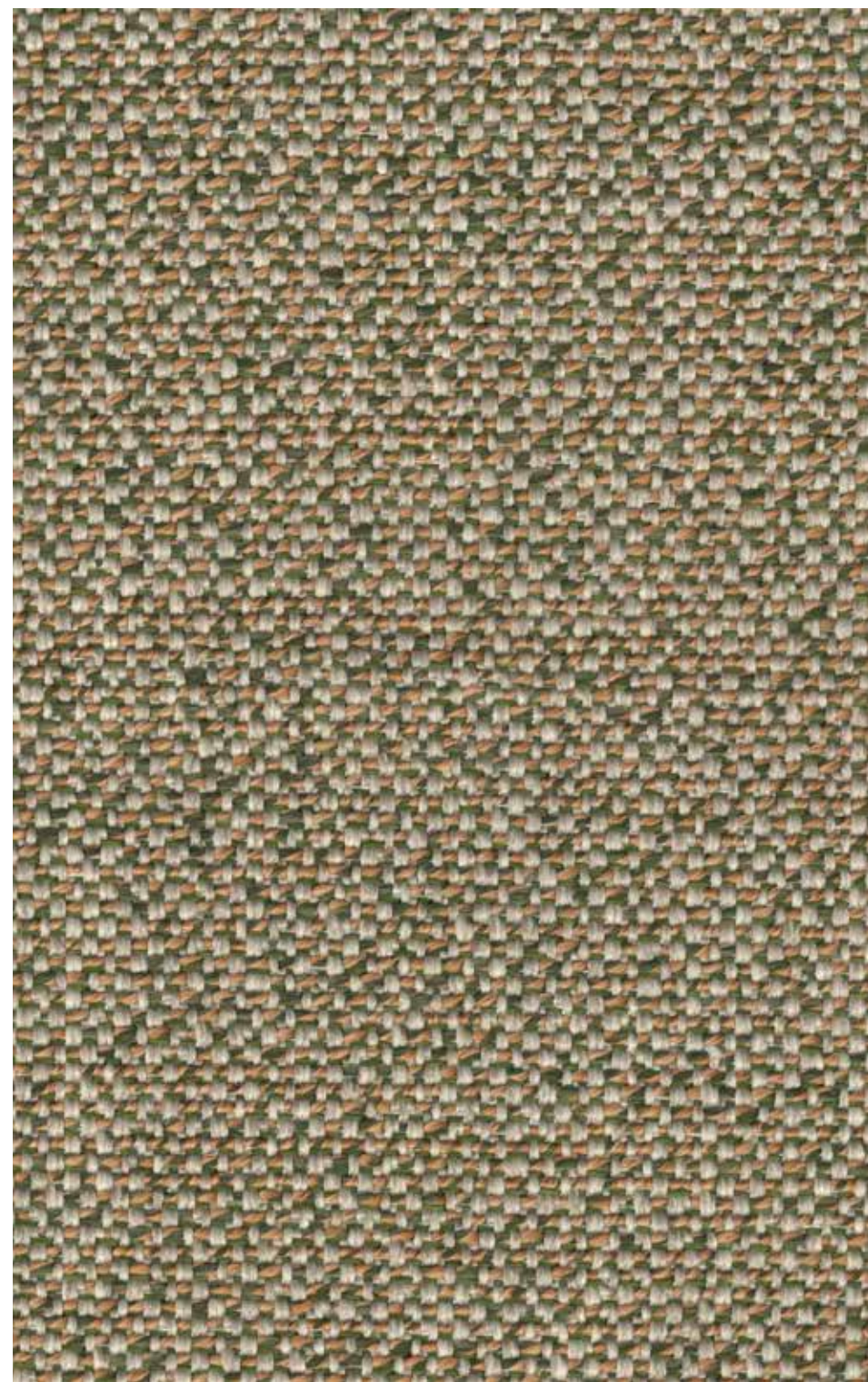
N°38



N°52



N°47



N°38

# Salvia

Versatile and elegant, functional, and intriguing: Salvia conveys a laid-back spirit that speaks of comfort, performance and beauty. This feel-good fabric is made from a double-coloured chenille, creating natural mélanges that evoke connotations with Mediterranean landscapes set in twilight.

Featuring a rich weave with a strong structure, Salvia satisfies those with busy lifestyles and who value peace and understatement in the after-hours.

crevin

# Salvia



Characteristics	<b>PERFORMANCE+</b>	
Sustainability	31% recycled fiber	
Composition	45%PP 24%PES 22%PES REC 5%CO REC 4%OF REC	
Width	140 + 4 cm	
Weight	715 gr/lm ± 5%	
Seam slippage resistance (mm) <small>EN ISO 13936/2</small>	Warp	2,00
	Weft	2,00
Abrasion resistance	End Point <small>EN ISO 12947/2</small>	45.000
	Change aspect 3000c <small>EN ISO 12947/4 / EN 14485 (Annex A)</small>	4
Pilling resistance <small>EN ISO 12945/2</small>		4 – 5
Assessment of ignitability* <small>*Upon request: BS5852 Source 1, EN1021-Part 2:2006, BS 7176 Low Hazard, UNI 9175 Classe 3IM</small>	BS5852 Source 0 EN 1021 Part 1 CAL TB 117 NFPA 260	Pass
Lightfastness <small>EN ISO 105-B02 / EN ISO 105 B02/A01</small>		>6
Colour fastness to rubbing <small>EN ISO 105-X12</small>	Dry	4 – 5
	Wet	4 – 5
Dimensional change domestic washing and drying (%) <small>EN ISO 3759 / EN ISO 6330 / EN ISO 5077</small>	Warp	-3%
	Weft	-3%
Washing conditions		

Designed and Crafted in Terrassa (Barcelona)

[www.crevin.com](http://www.crevin.com)



crevin



N°02



N°05



N°04



N°07



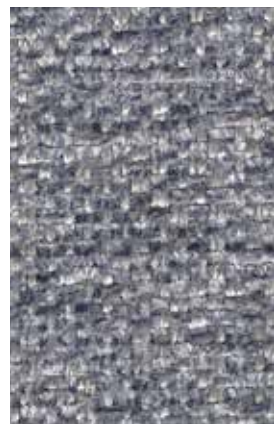
N°08



N°11



N°12



N°45



N°30



N°35



N°10



N°20



N°50



N°59



N°38



N°29



N°61



N°21



N°51



N°54



N°53



N°30

# Sublim

From the very beginning, Sublim's abstract jacquard pattern and mix of natural and vibrant colours have been the hallmark of its design. Soft, functional and extremely versatile, Sublim invites to living boldly and comfortably well.

Regardless the complexity of modern-day living, Sublim encapsulates the true essence of lasting quality, being a perfect option for those decorators who seek flexibility of use, durability, and timeless appeal.

crevin

# Sublim



Characteristics	<b>PERFORMANCE+</b>	
Sustainability	56% recycled fiber	
Composition	44%PES 43%PES REC 7%CO REC 6%OF REC	
Width	140 + 4 cm	
Weight	654 gr/lm ± 5%	
Seam slippage resistance (mm) <small>EN ISO 13936/2</small>	Warp	2,90
	Weft	3,00
Abrasion resistance	End Point <small>EN ISO 12947/2</small>	60000
	Change aspect 3000c <small>EN ISO 12947/4 / EN 14485 (Annex A)</small>	4
Pilling resistance <small>EN ISO 12945/2</small>	5	
Assessment of ignitability* <small>*Upon request: BS5852 Source 1, EN1021-Part 2:2006, BS 7176 Low Hazard, UNI 9175 Classe 3IM</small>	BS5852 Source 0 EN 1021 Part 1 CAL TB 117 NFPA 260	Pass
Lightfastness <small>EN ISO 105-B02 / EN ISO 105 B02/A01</small>	5—6	
Dimensional change domestic washing and drying (%) <small>EN ISO 3769 / EN ISO 6330 / EN ISO 5077</small>	Warp	-1%
	Weft	-1%
Washing conditions		

Designed and Crafted in Terrassa (Barcelona)

[www.crevin.com](http://www.crevin.com)



Data Sheet



crevin

Sublim



N°01



N°07



N°05



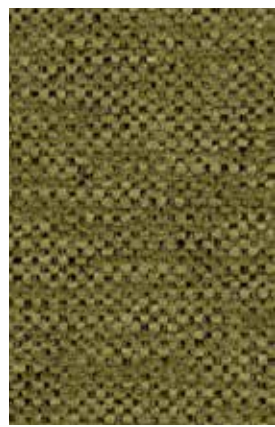
N°13



N°34



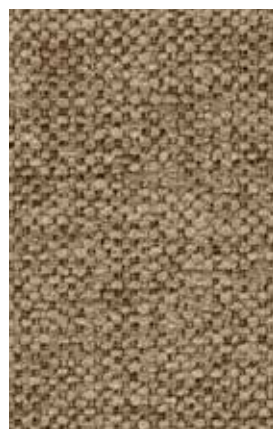
N°32



N°30



N°02



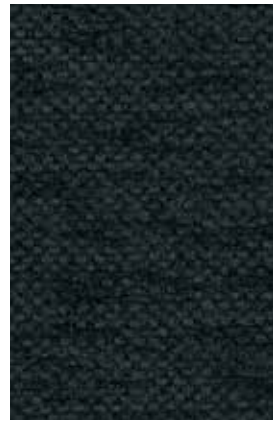
N°11



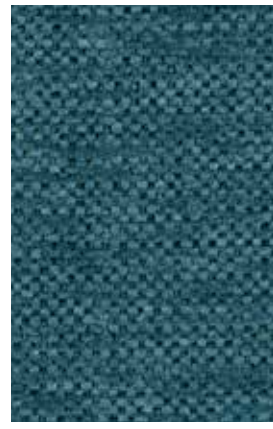
N°75



N°33



N°45



N°43



N°40



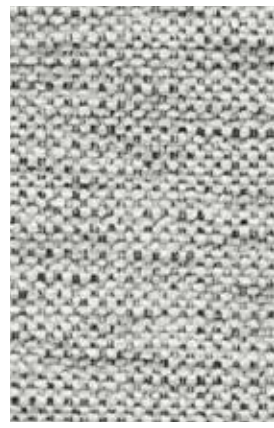
N°19



N°16



N°12



N°51



N°54



N°52



N°26



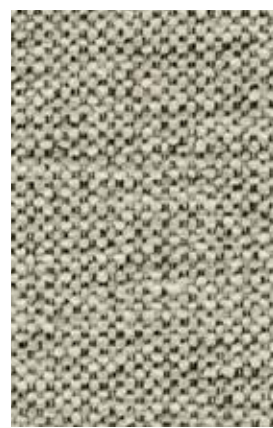
N°71



N°62



N°64



N°50



N°53



N°71

